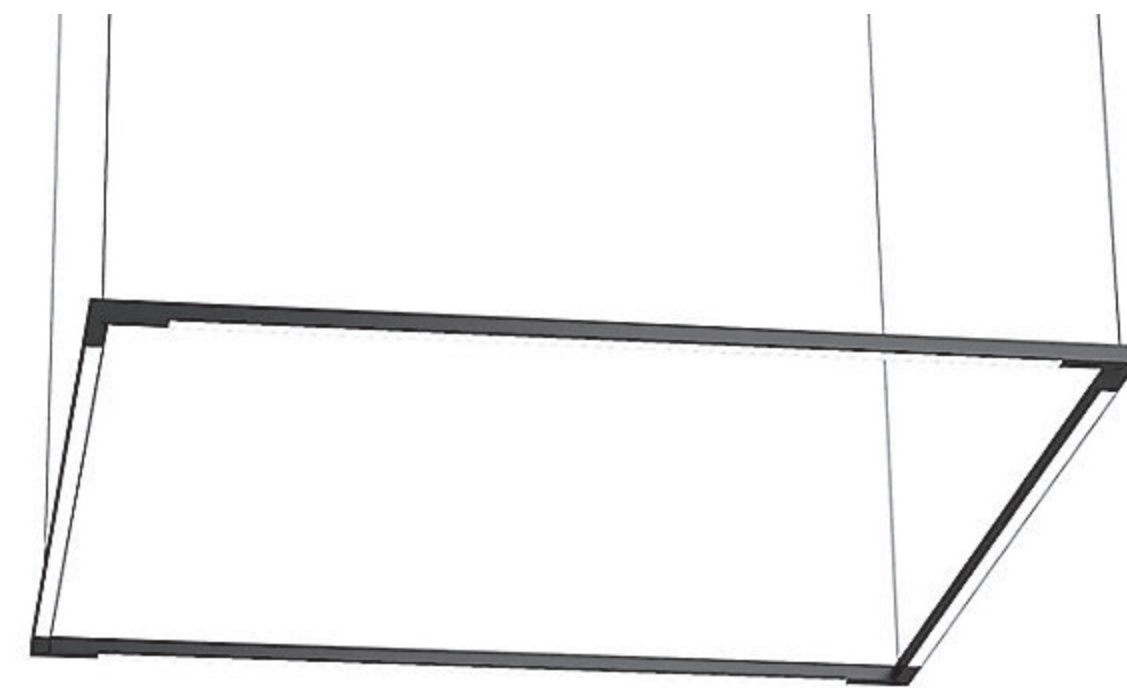




**ap-11a [stacked w/d]**  
samsung  
sawadrgv3003  
black stainless steel



**lf-d [dining chandelier]**  
koncept  
z-bar square led  
black



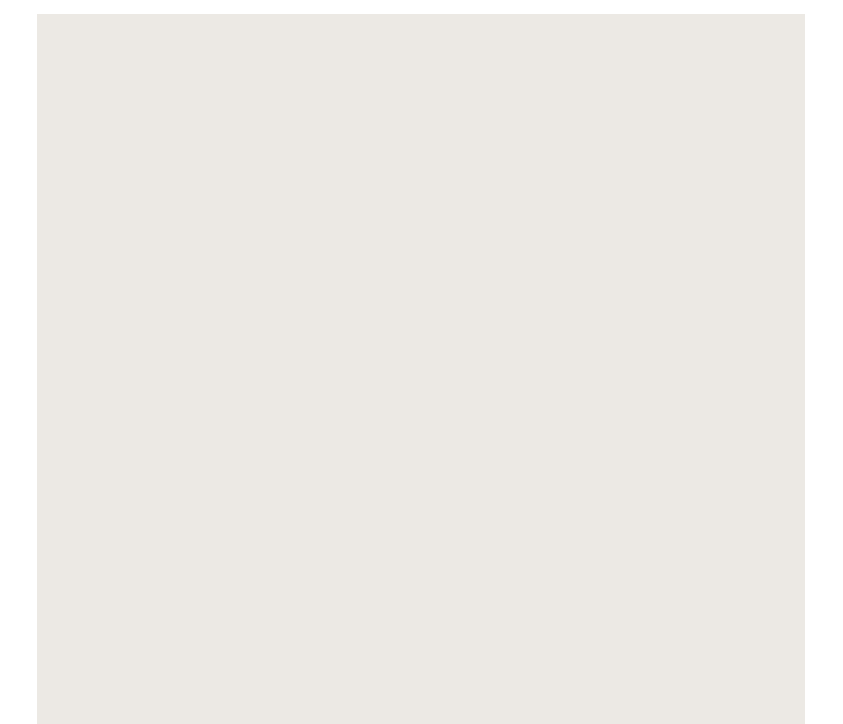
**lf-b [undercabinet light]**  
juno  
upted | various sizes  
white



**lf-a/a1 [downlight]**  
dmf  
drd5s-4-r-10-9-30-blank  
4" round, white



**lf-c [island pendant light]**  
sonneman | intervals collection  
4' linear led | 20qkl04c  
satin black



**pt-11 [typical wall paint]**  
sherwin williams | duration home  
snowbound sw7004  
satin finish



**ap-01 [refrigerator 36"]**  
bosch | benchmark series  
b36it900np  
custom panel (cab-01)



**ap-03b [range hood 36"]**  
imperial  
c2036sd4-12-ss  
stainless steel



**ap-02 [gas range 36"]**  
viking | 5 series  
vgr5364g  
stainless steel



**p-11a [sink]**  
kraus  
khu100-32  
stainless steel w/ delta 72030



**p-11b [faucet]**  
delta  
trinsic 9159-dst  
matte black



**ct-01 [quartz countertop]**  
msi  
quartz | 3cm artic white 3cm  
artic white, polished



**tl-07 [backsplash]**  
msi  
porcelain slab | 59" x 118"  
arabascato polished bookmatched



**ap-04 [dishwasher 24"]**  
bosch | 800 series  
shvm78w53n  
custom panel (cab-0)



**ap-06/6a [built-in mw 27/30"]**  
viking | 5 series  
vm0s501ss  
stainless steel w/ trim kit



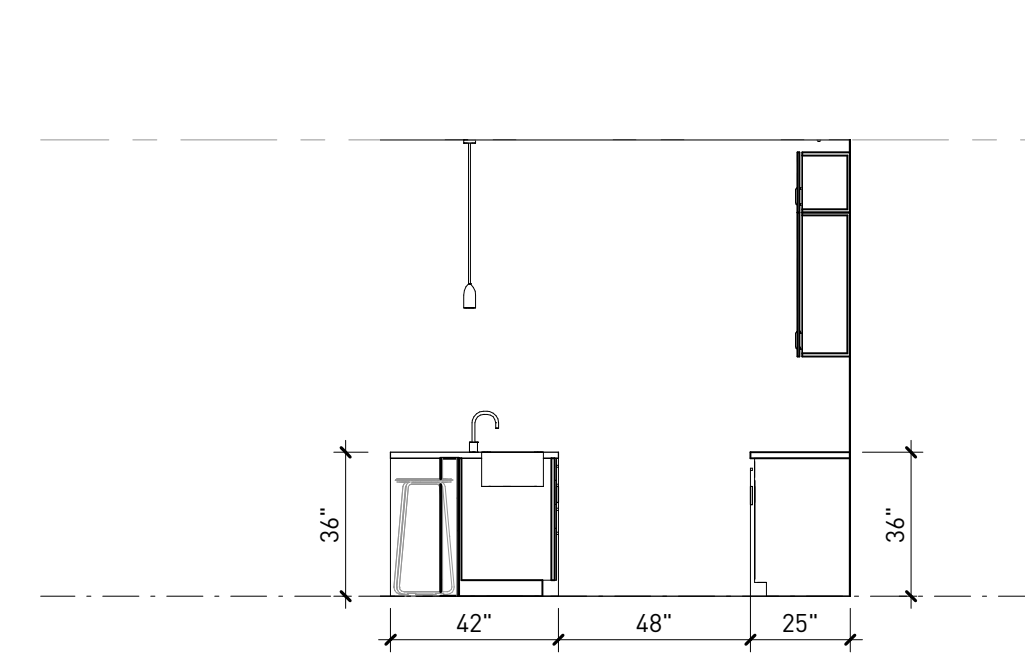
**ap-05 [garbage disposal]**  
moen  
gx75c  
3/4 hp



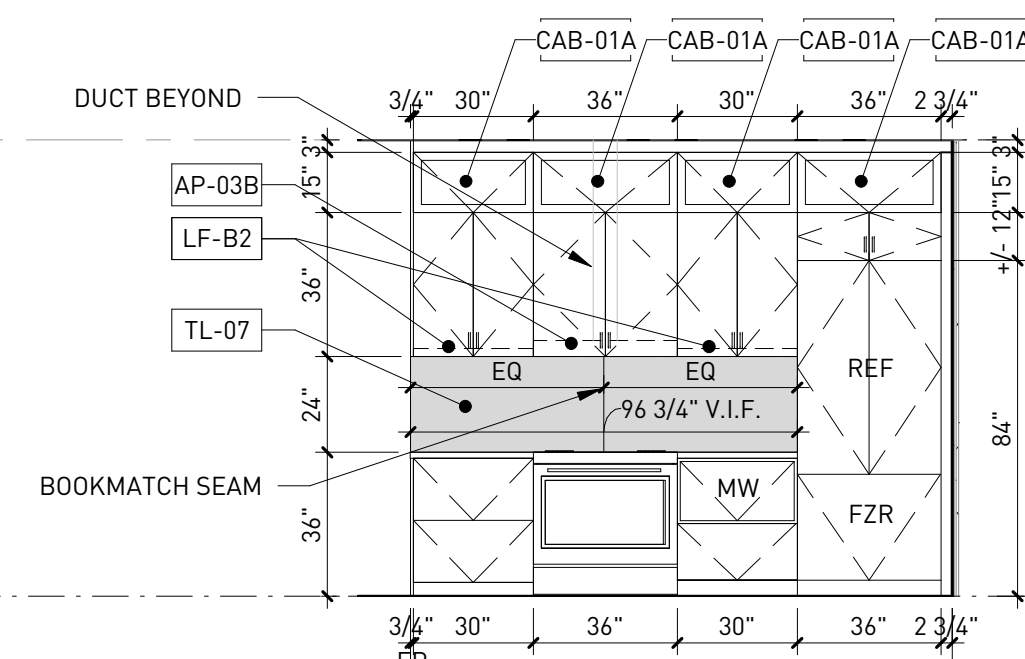
**cab-01 [typ. cabinet]**  
ultracraft  
adriatic  
satin white w/ hardware hdw-01  
hdw-01 | top knobs, tk502blk



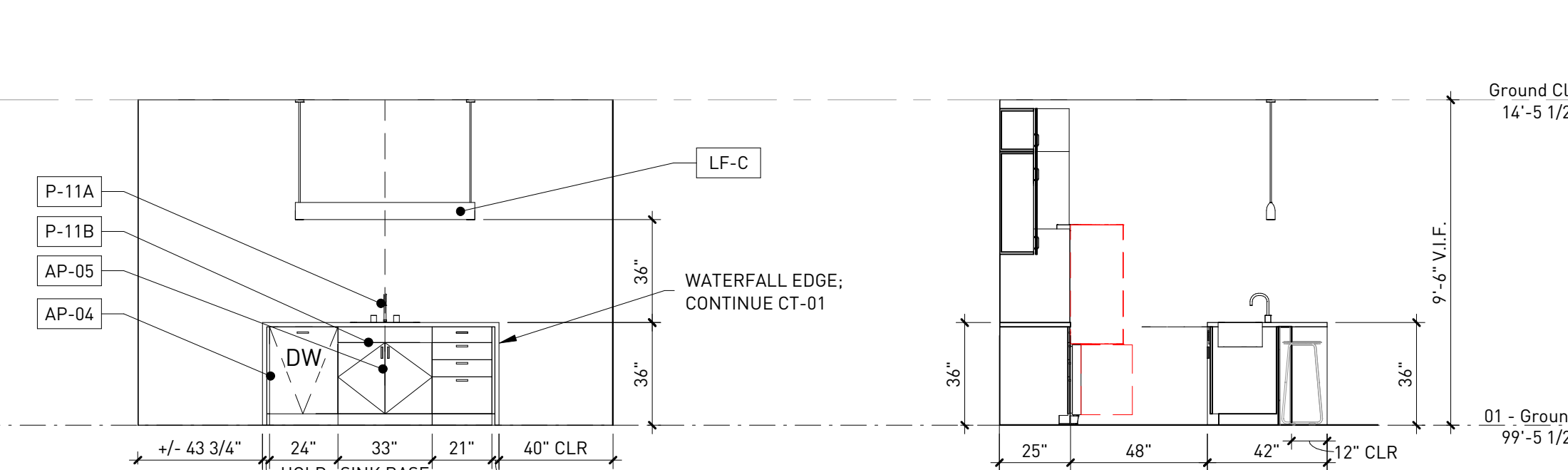
**wf-01 [wood floor]**  
fuzion flooring  
prarie storm collection  
oak | april snow



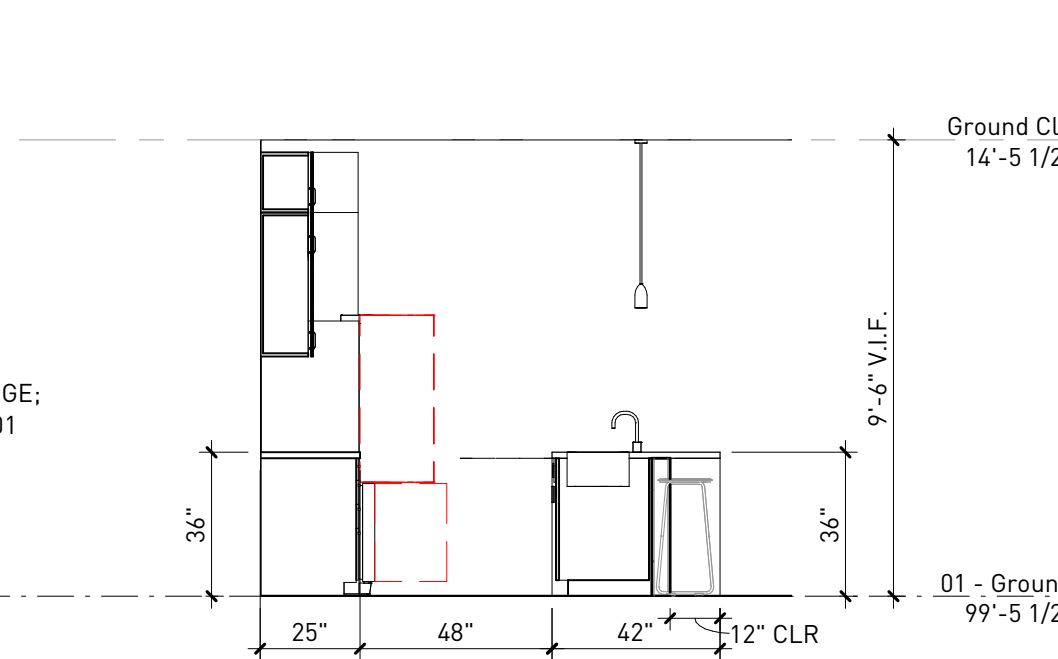
**20 UNIT 101 - KITCHEN - ELEVATION 4**  
ID4.11 1/4" = 1'-0"



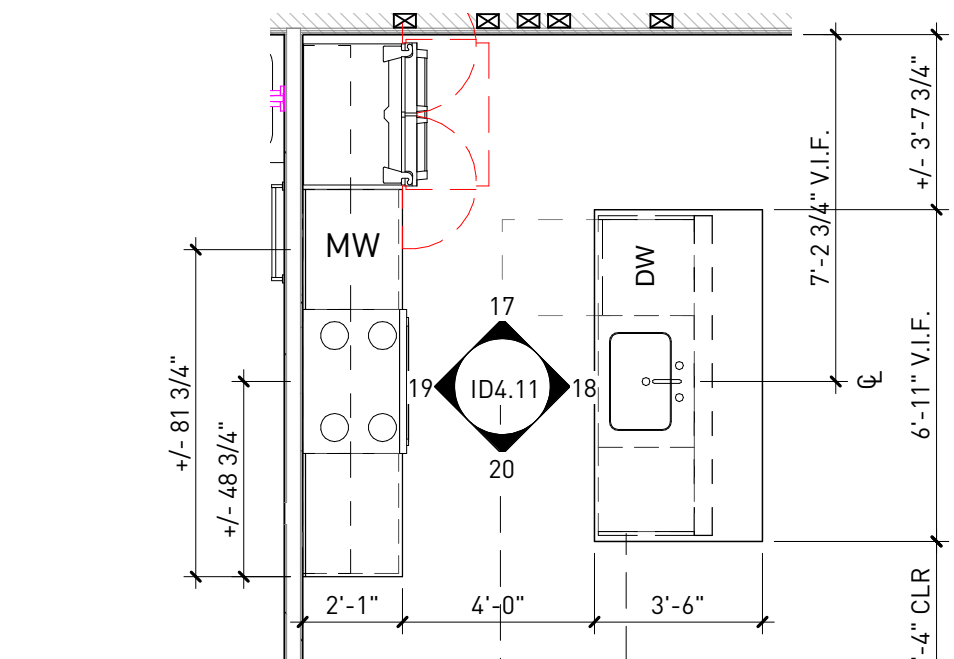
**19 UNIT 101 - KITCHEN - ELEVATION 3**  
ID4.11 1/4" = 1'-0"



**18 UNIT 101 - KITCHEN - ELEVATION 2**  
ID4.11 1/4" = 1'-0"



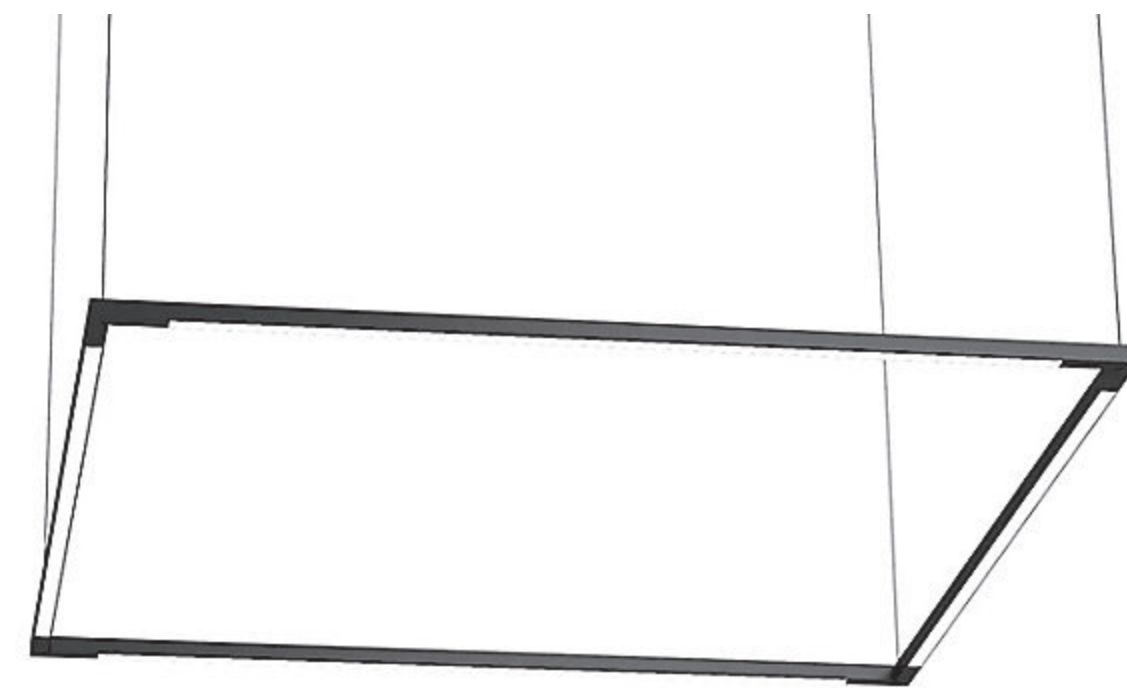
**17 UNIT 101 - KITCHEN - ELEVATION 1**  
ID4.11 1/4" = 1'-0"



**16 UNIT 101 - KITCHEN - ENLARGED PLAN**  
ID4.11 1/4" = 1'-0"



**ap-11a [stacked w/d]**  
samsung  
sawadrgv3003  
black stainless steel



**lf-d [dining chandelier]**  
koncept  
z-bar square led  
black



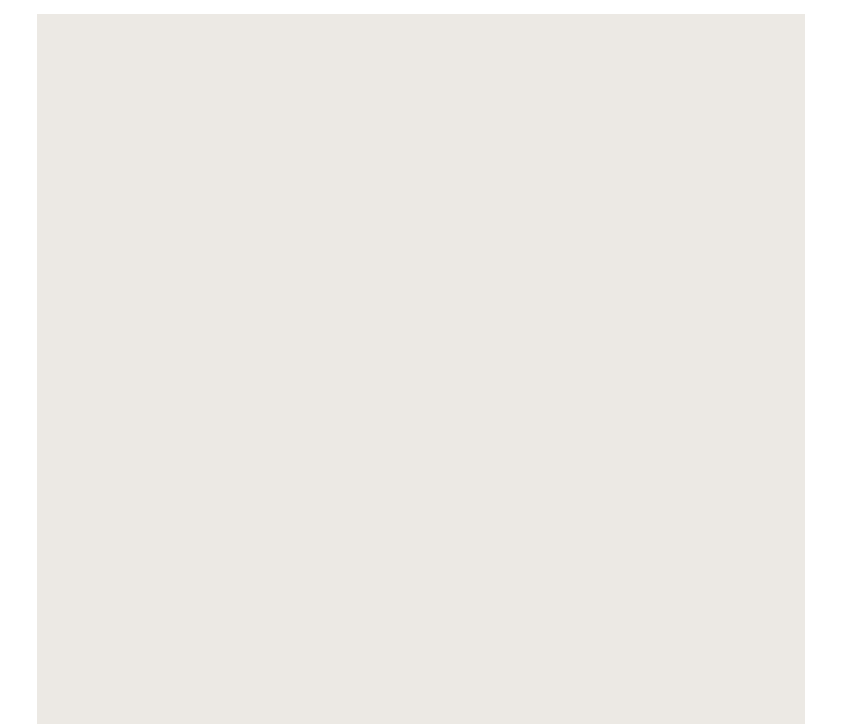
**lf-b [undercabinet light]**  
juno  
upled | various sizes  
white



**lf-a/a1 [downlight]**  
dmf  
drd5s-4-r-10-9-30-blank  
4" round, white



**lf-c [island pendant light]**  
sonneman | intervals collection  
4' linear led | 20qk104c  
satin black



**pt-11 [typical wall paint]**  
sherwin williams | duration home  
snowbound sw7004  
satin finish



**ap-01 [refrigerator 36"]**  
bosch | benchmark series  
b36it900np  
custom panel (cab-01)



**ap-03b [range hood 36"]**  
imperial  
c2036sd4-12-ss  
stainless steel



**ap-02 [gas range 36"]**  
viking | 5 series  
vgr5364g  
stainless steel



**ap-04 [dishwasher 24"]**  
bosch | 800 series  
shvm78w53n  
custom panel (cab-01)



**p-11a [sink]**  
kraus  
khu100-32  
stainless steel w/ delta 72030



**ap-06/06a [built-in mw 27/30"]**  
viking | 5 series  
vm0s501ss  
stainless steel w/ trim kit



**p-11b [faucet]**  
delta  
trinsic 9159-dst  
matte black



**ap-05 [garbage disposal]**  
moen  
gx75c  
3/4 hp



**ct-01 [quartz countertop]**  
msi  
quartz | 3cm artic white 3cm  
artic white, polished



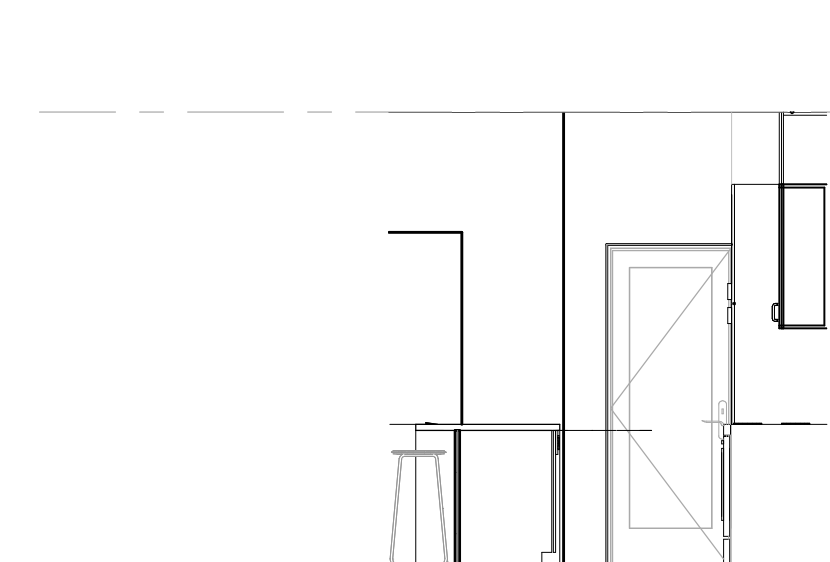
**cab-01 [typ. cabinet]**  
ultracraft  
adriatic  
satin white w/ hardware hdw-01  
hdw-01 | top knobs, tk502blk



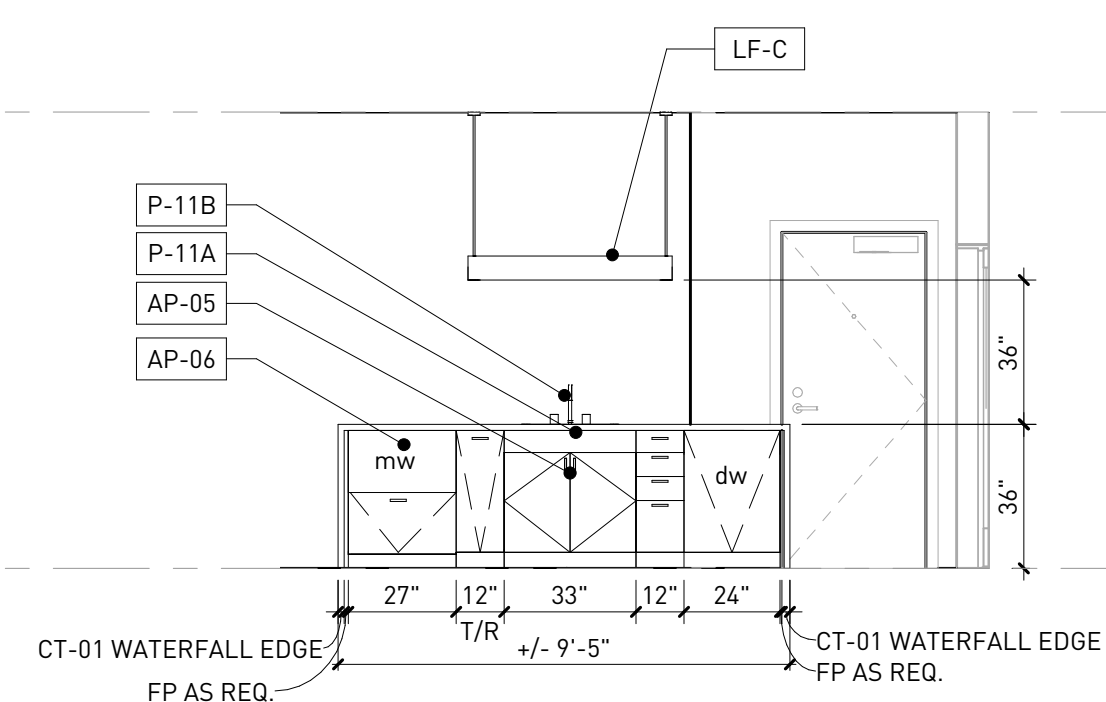
**tl-07 [backsplash]**  
msi  
porcelain slab | 59" x 118"  
arabascato polished bookmatched



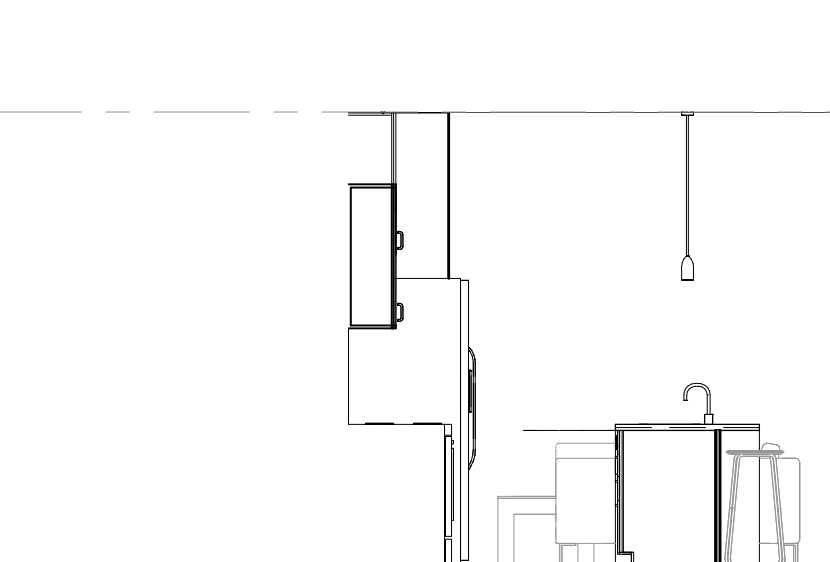
**wd-02 [wood floor]**  
fuzion flooring  
prarie storm collection  
oak | april snow



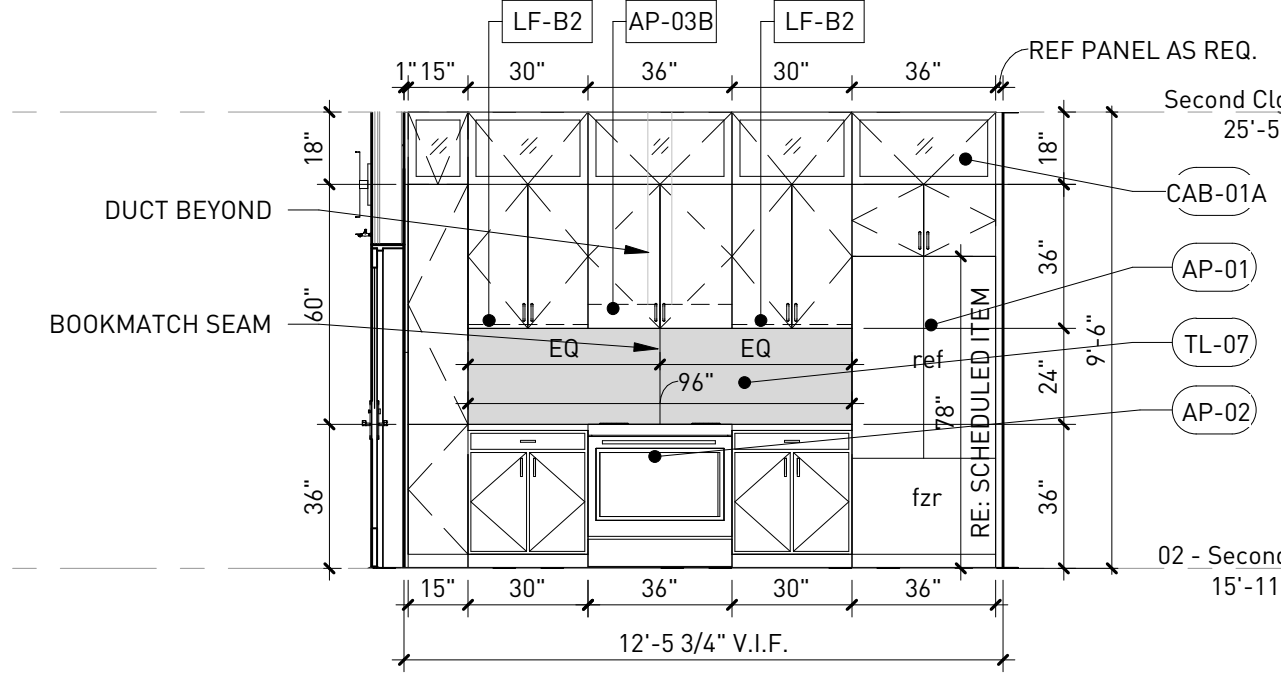
**10** UNIT 201 - KITCHEN - ELEVATION 4  
ID4.12 1/4" = 1'-0"



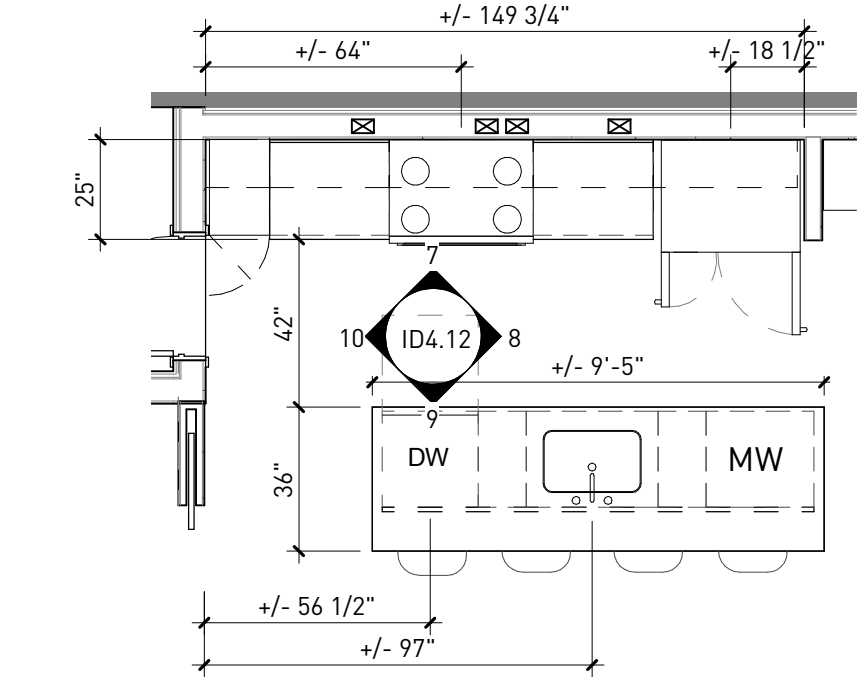
**9** UNIT 201 - KITCHEN - ELEVATION 3  
ID4.12 1/4" = 1'-0"



**8** UNIT 201 - KITCHEN - ELEVATION 2  
ID4.12 1/4" = 1'-0"



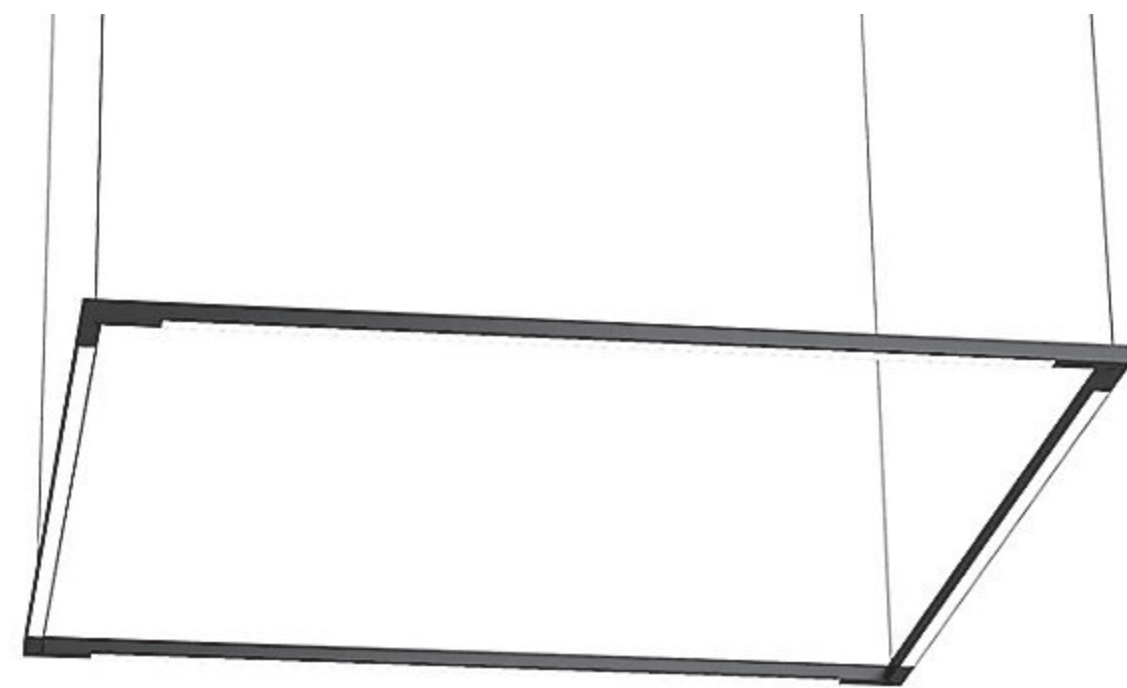
**7** UNIT 201 - KITCHEN - ELEVATION 1  
ID4.12 1/4" = 1'-0"



**6** UNIT 201 - KITCHEN - ENLARGED PLAN  
ID4.12 1/4" = 1'-0"



**ap-11a [stacked w/d]**  
samsung  
sawadrgv3003  
black stainless steel



**lf-d [dining chandelier]**  
koncept  
z-bar square led  
black



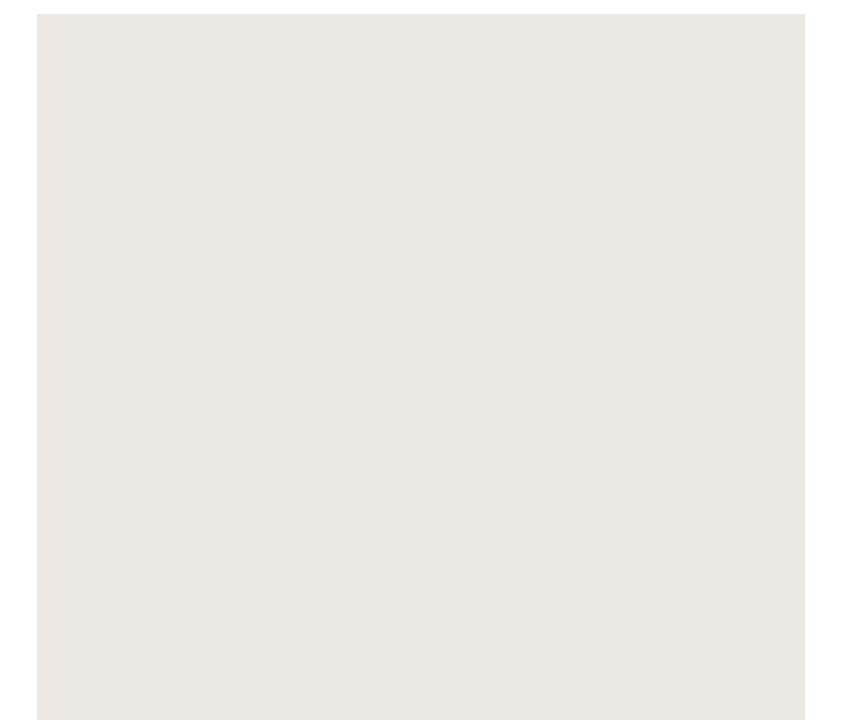
**lf-b [undercabinet light]**  
juno  
upled | various sizes  
white



**lf-a/a1 [downlight]**  
dmf  
drd5s-4-r-10-9-30-blank  
4" round, white



**lf-c [island pendant light]**  
sonneman | intervals collection  
4' linear led | 20qkl04c  
satin black



**pt-11 [typical wall paint]**  
sherwin williams | duration home  
snowbound sw7004  
satin finish



**ap-01 [refrigerator 36"]**  
bosch | benchmark series  
b36it900np  
custom panel (cab-01)



**ap-03b [range hood 36"]**  
imperial  
c2036sd4-12-ss  
stainless steel



**ap-02 [gas range 36"]**  
viking | 5 series  
vgr5364g  
stainless steel



**ap-04 [dishwasher 24"]**  
bosch | 800 series  
shvm78w53n  
custom panel (cab-01)



**p-11a [sink]**  
kraus  
khu100-32  
stainless steel w/ delta 72030



**p-11b [faucet]**  
delta  
trinsic 9159-dst  
matte black



**ct-01 [quartz countertop]**  
msi  
quartz | 3cm artic white 3cm  
artic white, polished



**tl-07 [backsplash]**  
msi  
porcelain slab | 59" x 118"  
arabascato polished bookmatched



**ap-06/06a [built-in mw 27/30"]**  
viking | 5 series  
vm0s501ss  
stainless steel w/ trim kit



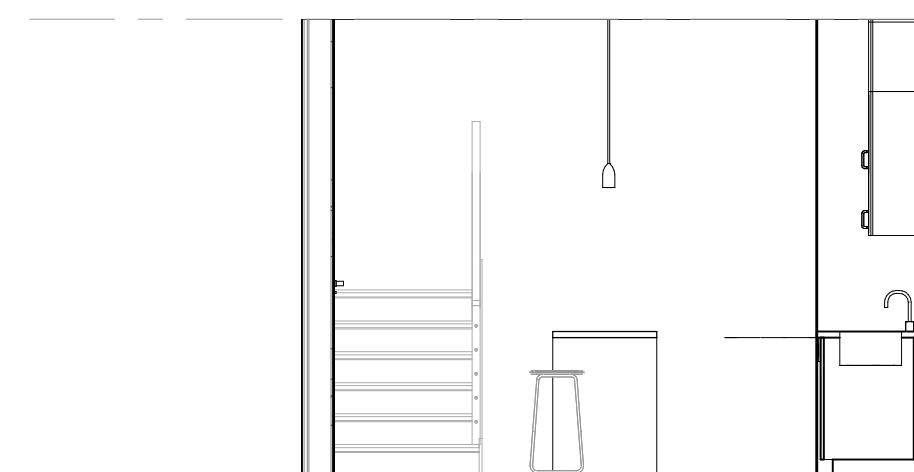
**ap-05 [garbage disposal]**  
moen  
gx75c  
3/4 hp



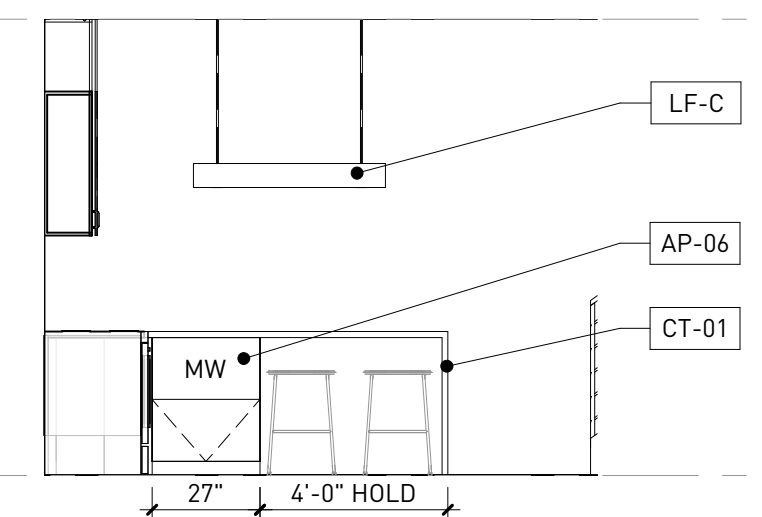
**cab-01 [typ. cabinet]**  
ultracraft  
adriatic  
satin white w/ hardware hdw-01  
hdw-01 | top knobs, tk502blk



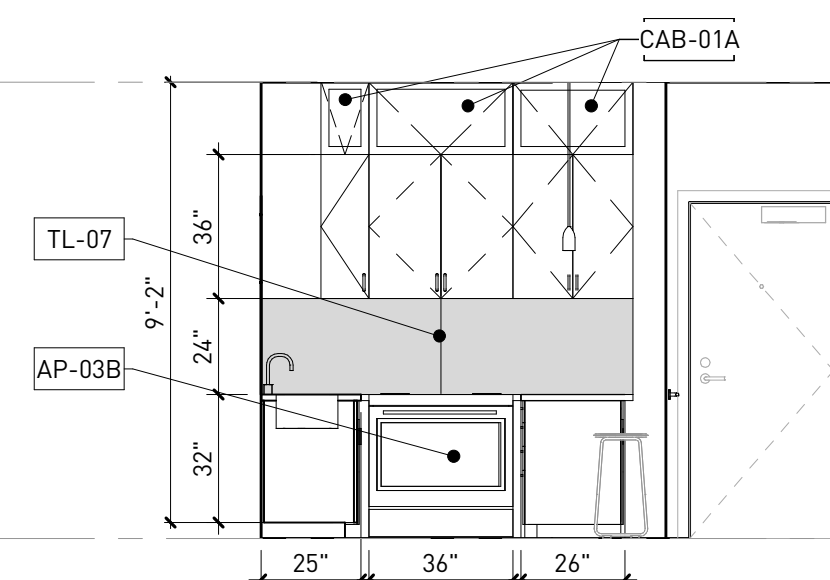
**wf-01 [wood floor]**  
fuzion flooring  
prarie storm collection  
oak | april snow



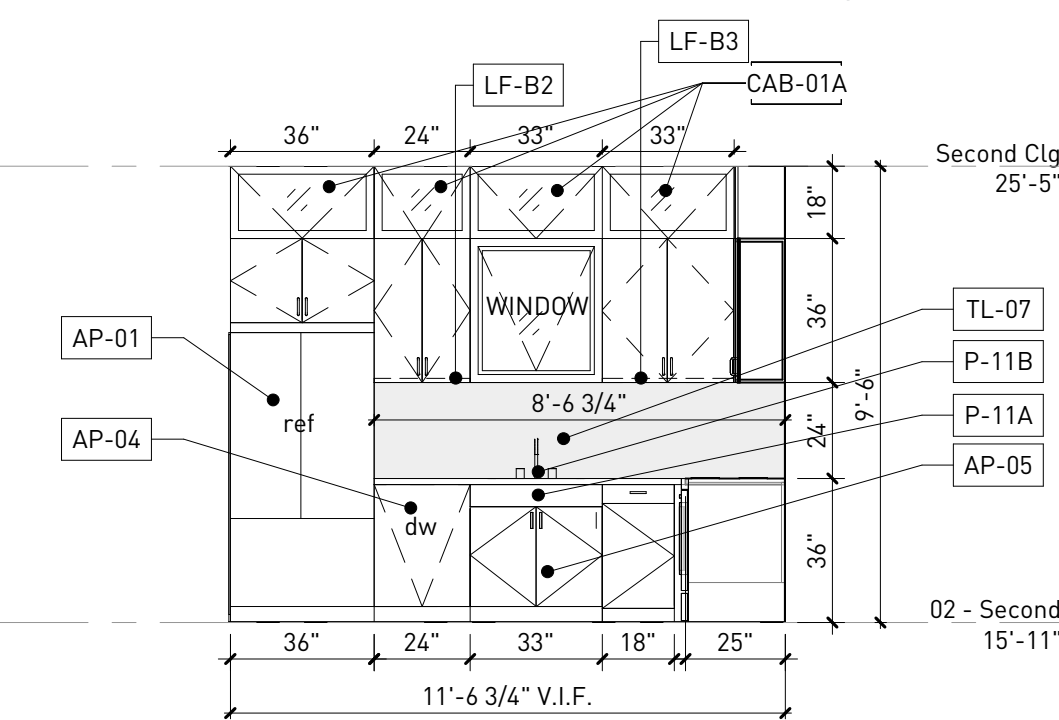
**15** UNIT 202 - KITCHEN - ELEVATION 4  
ID4.12 1/4" = 1'-0"



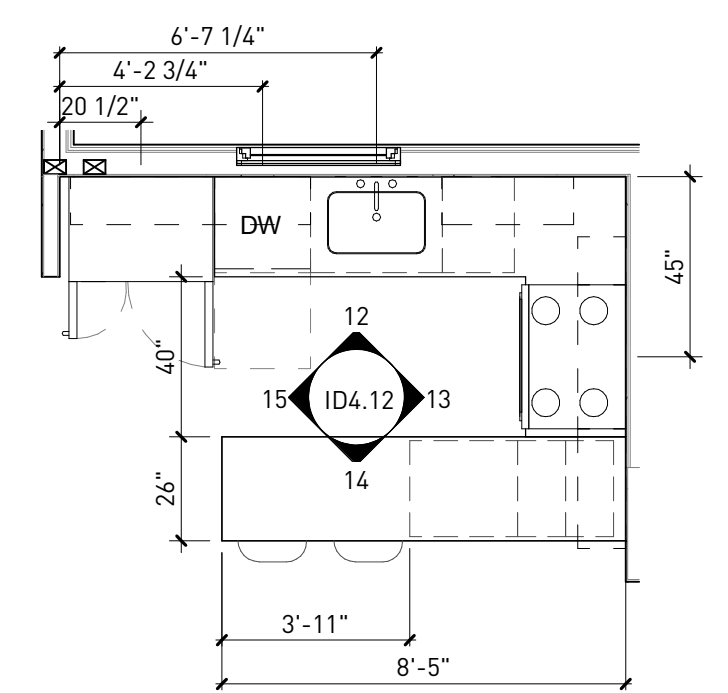
**14** UNIT 202 - KITCHEN - ELEVATION 3  
ID4.12 1/4" = 1'-0"



**13** UNIT 202 - KITCHEN - ELEVATION 2  
ID4.12 1/4" = 1'-0"



**12** UNIT 202 - KITCHEN - ELEVATION 1  
ID4.12 1/4" = 1'-0"



**11** UNIT 202 - KITCHEN - ENLARGED PLAN  
ID4.12 1/4" = 1'-0"



**ap-11a [stacked w/d]**  
samsung  
sawadrgv3003  
black stainless steel



**ap-01a [refrigerator 24"]**  
bosch | 800 series  
b09ib81nsp  
custom panel (cab-01)



**ap-03a [microwave hood 24"]**  
haier  
hmv1472bhs  
stainless steel



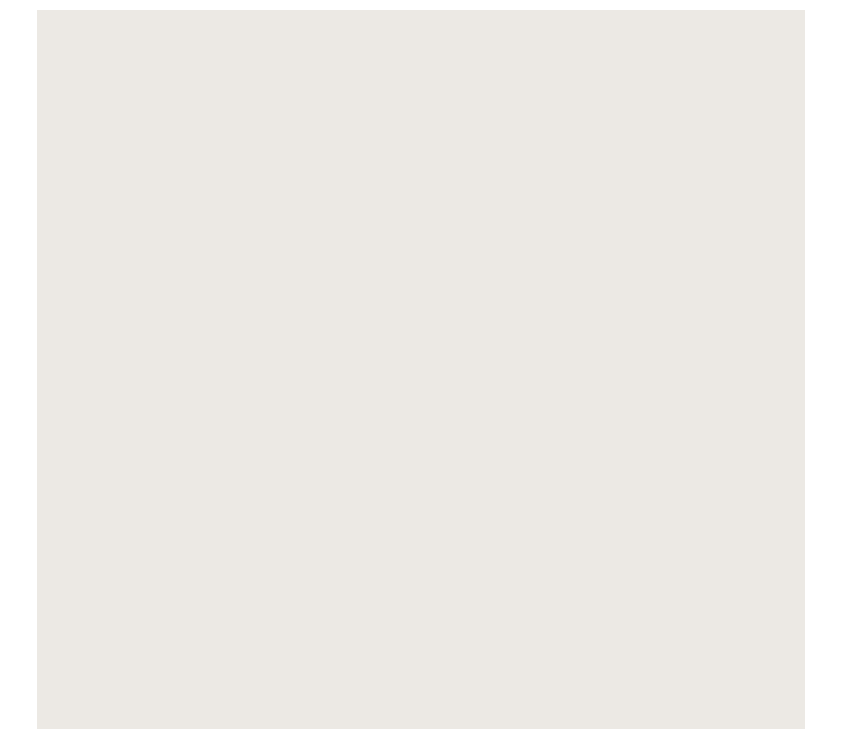
**ap-02a [range 24"]**  
haier | 800 series  
shvm78w53n  
custom panel (cab-01)



**lf-b [undercabinet light]**  
juno  
upled | various sizes  
white



**lf-a/a1 [downlight]**  
dmf  
drd5s-4-r-10-9-30-blank  
4" round, white



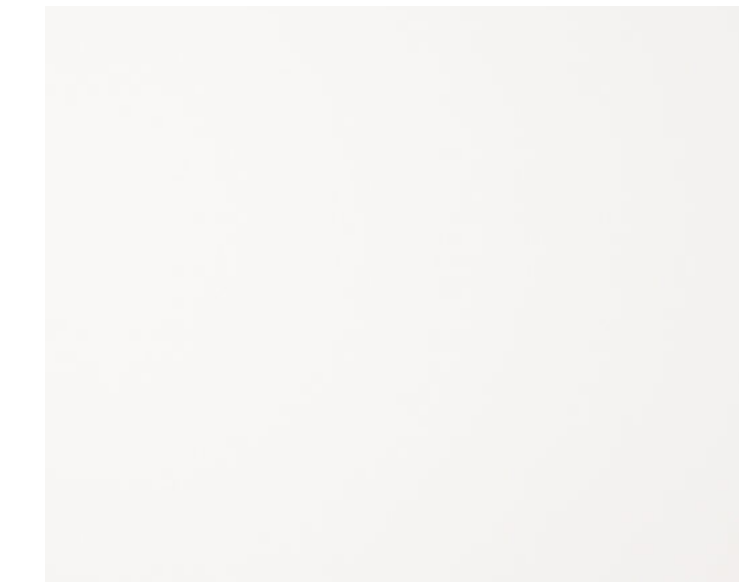
**pt-11 [typical wall paint]**  
sherwin williams | duration home  
snowbound sw7004  
satin finish



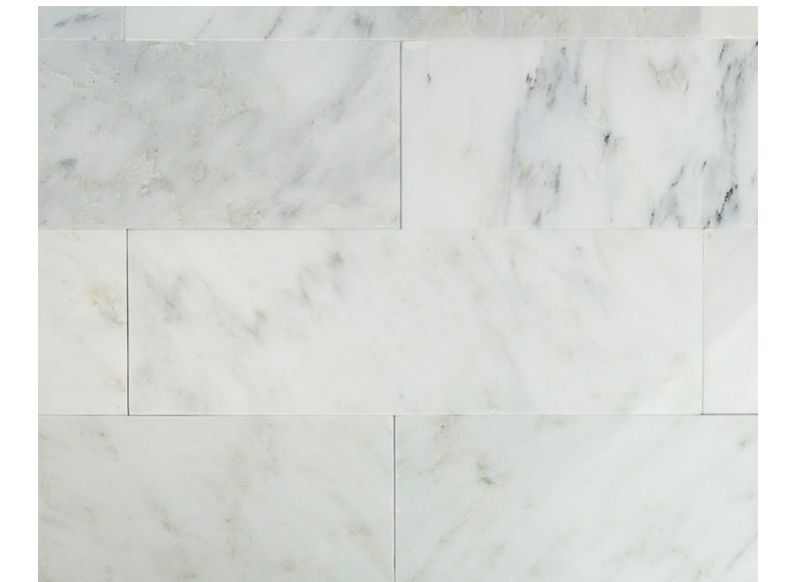
**p-21a [sink]**  
kraus  
khu101-23  
stainless steel w/ delta 72030



**p-11b [faucet]**  
delta  
trinsic 9159-dst  
matte black



**ct-01 [quartz countertop]**  
msi  
quartz | 3cm artic white 3cm  
artic white, polished



**tl-06 [backsplash wall tile]**  
tilebar  
asian statuary  
4"x12" w/ bostik white grout



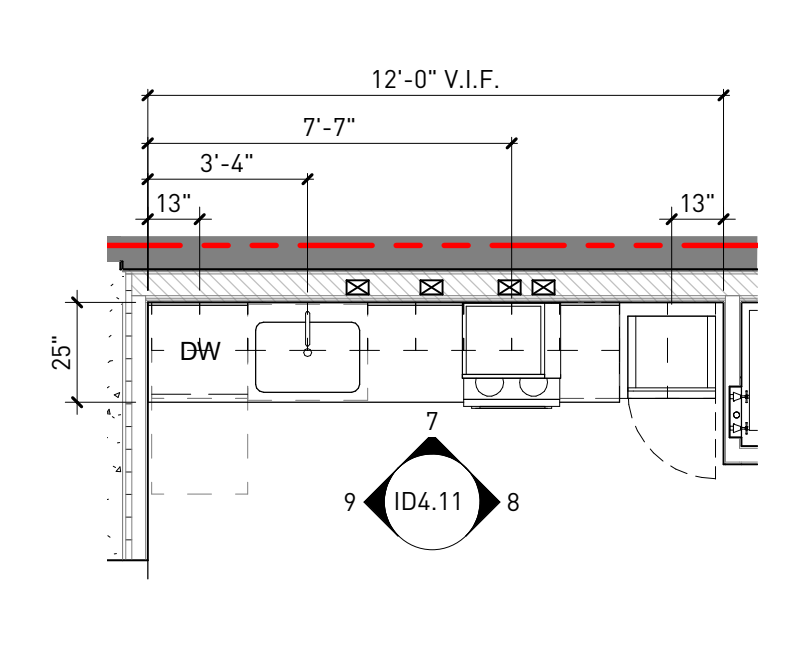
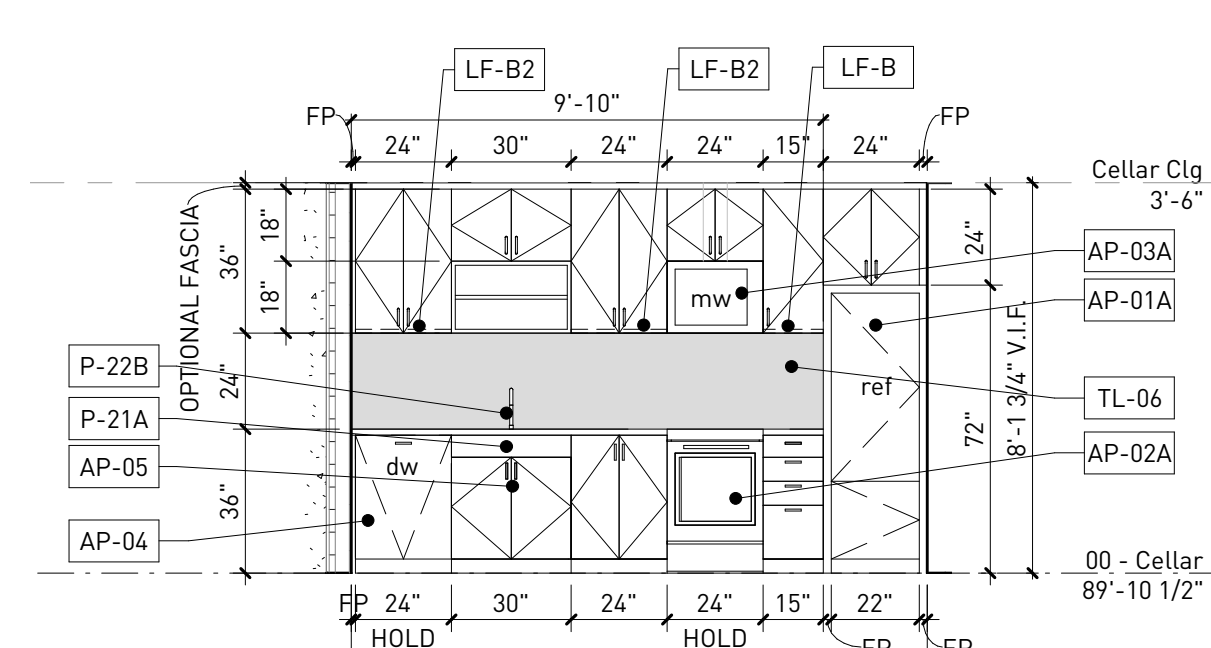
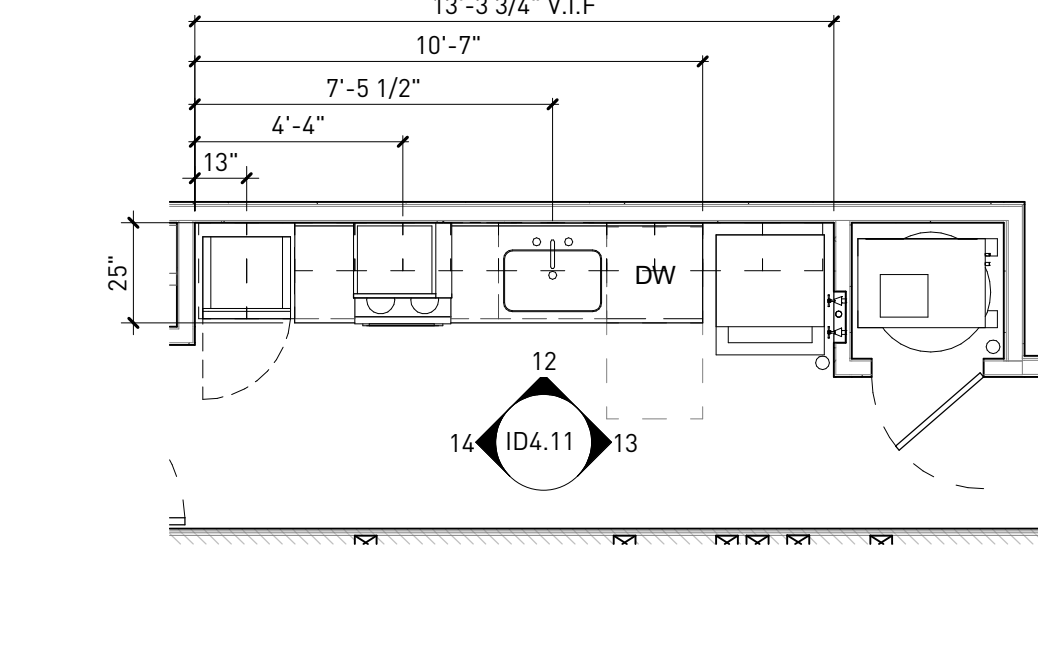
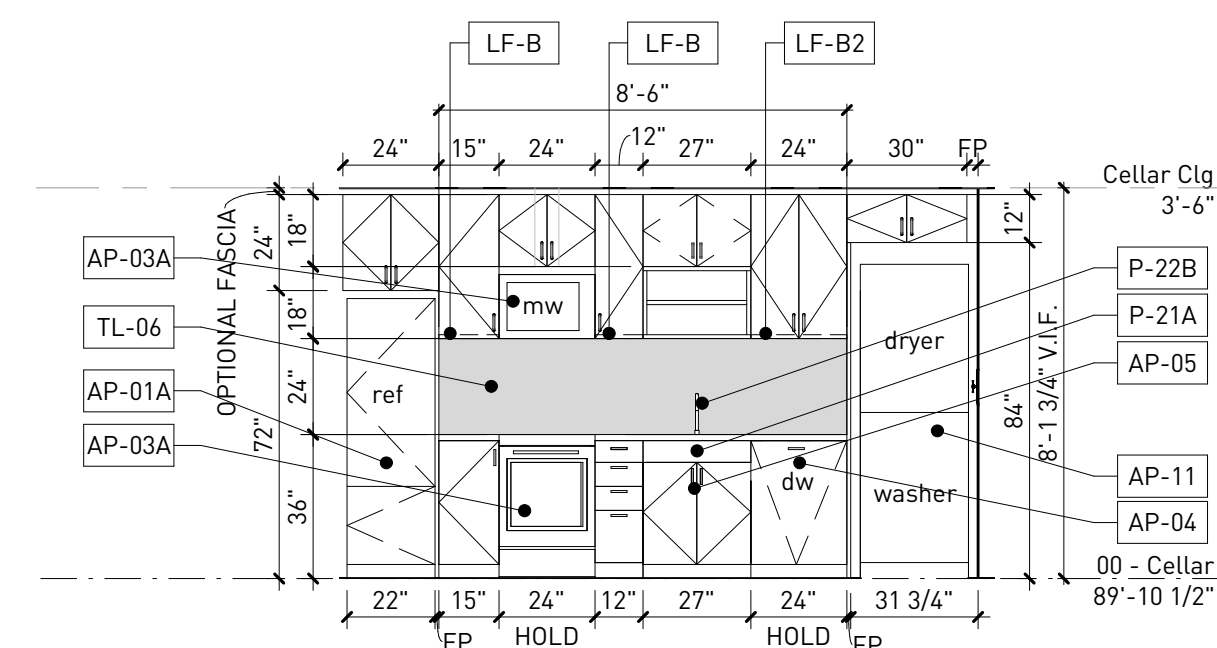
**ap-04 [dishwasher 24"]**  
bosch | 800 series  
shvm78w53n  
custom panel (cab-01)



**cab-01 [typ. cabinet]**  
ultracraft  
adriatic  
satin white w/ hardware hdw-01  
hdw-01 | top knobs, tk502blk



**wd-02 [wood floor]**  
fuzion flooring  
prarie storm collection  
oak | april snow





**ta-various [toilet accessories]**  
gatco  
studio - various  
matte black



**p-01 [toilet]**  
swiss madison  
st. tropex sm-1t254  
white



**p-02b [tub/shower trim]**  
brizo  
jason wu t60475-bl  
matte black



**p-02a [tub]**  
kingston brass  
aqua eden hvtd603122 (l/r)  
white

**lf-g [sconce / bathbar]**  
kuzco lighting  
vega vl10323-bk  
black



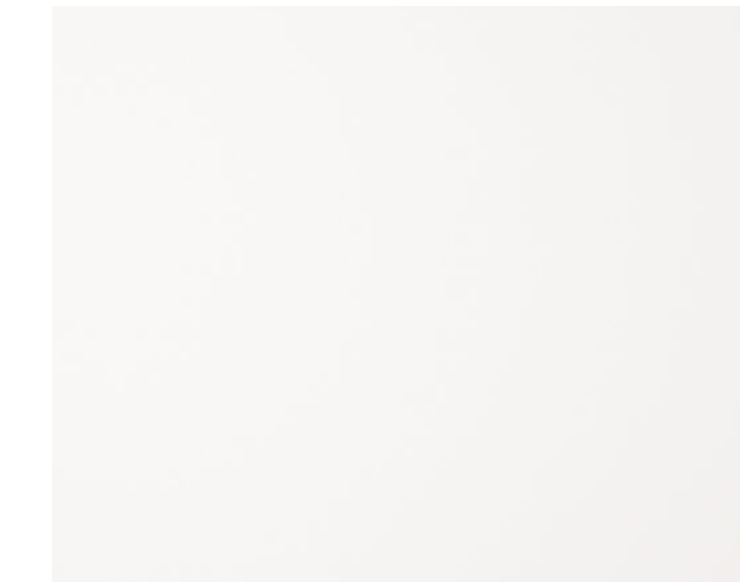
**ta-09 [vanity mirror]**  
renwil  
mt1851  
matte black



**p-03a**  
kingston brass  
continental ls8220ctl  
matte black



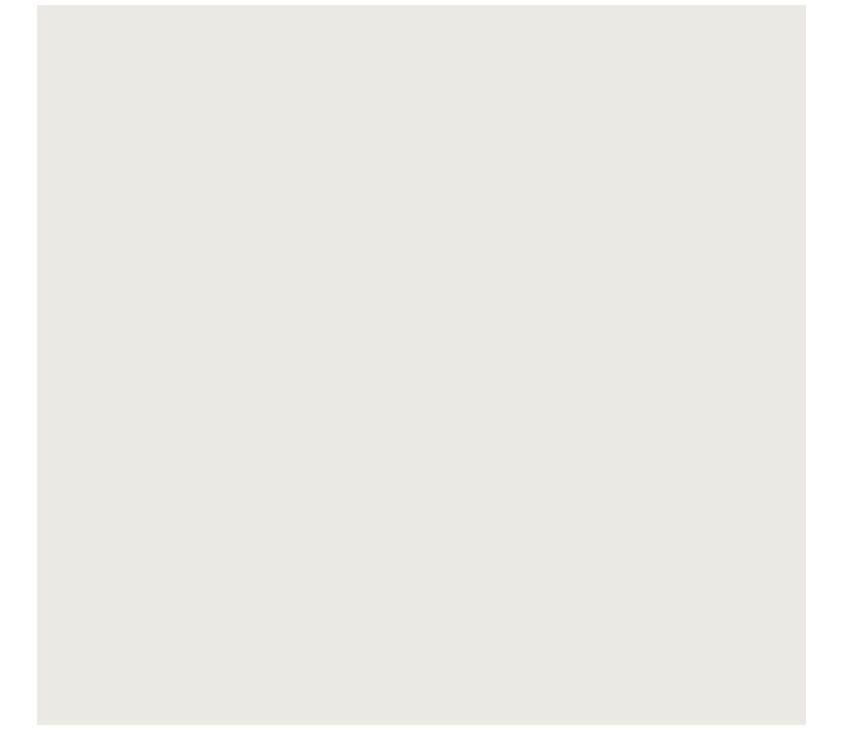
**p-03b [undermount sink]**  
kohler  
verticyl rectangle k-2882  
white



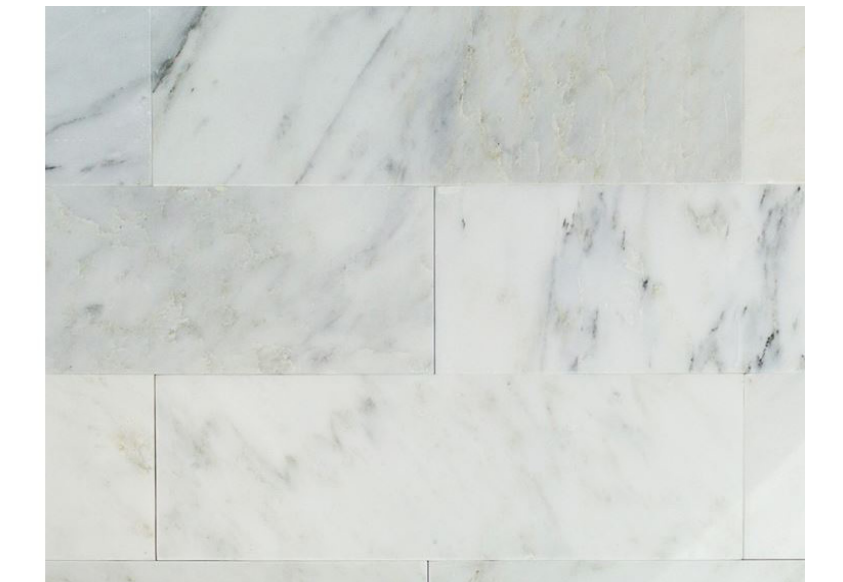
**ct-01 [quartz countertop]**  
msi  
quartz | 3cm artice white 3cm  
artice white, polished



**cab-06 [typ. cabinet]**  
ultracraft  
adriatic  
satin white w/ hardware hdw-01  
hdw-02 | top knobs, tk501blk



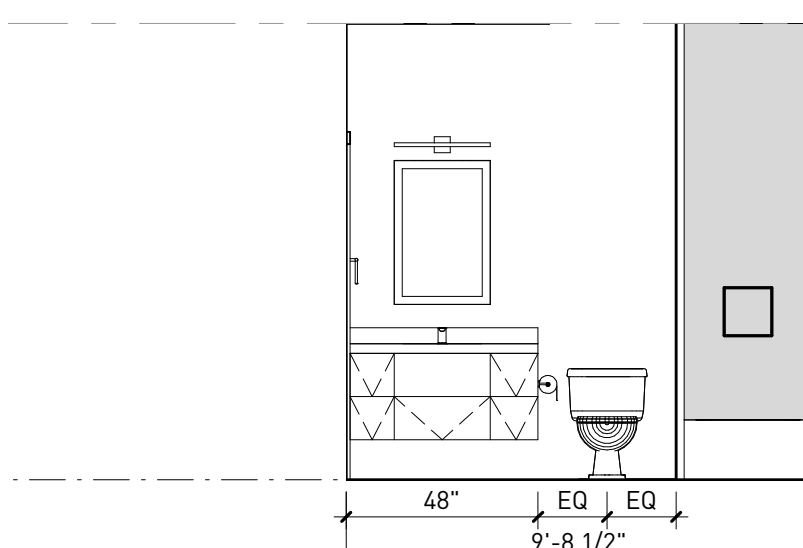
**pt-14 [typical wall paint]**  
sherwin williams | duration home  
snowbound sw7004  
satin finish



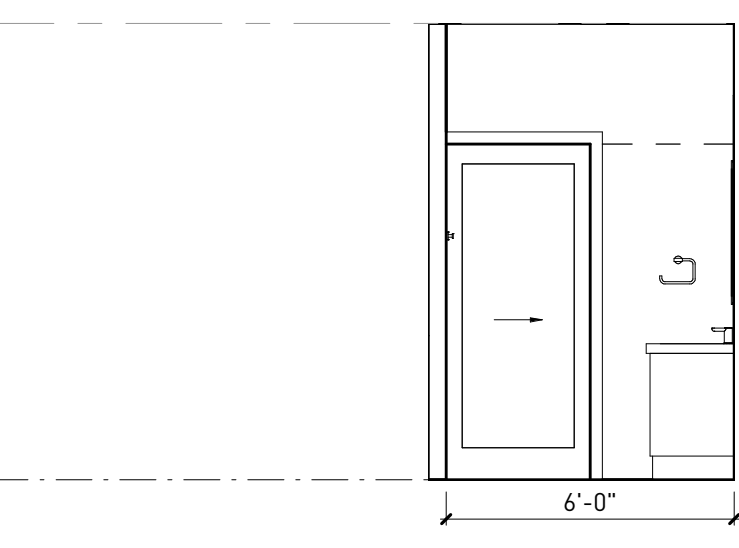
**tl-06 [shower wall tile]**  
tilebar  
asian statuary  
4"x12" w/ bostik white grout



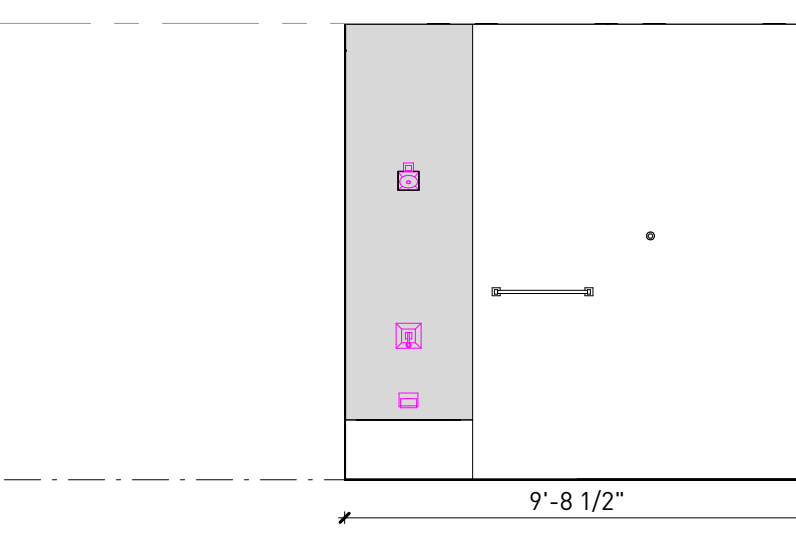
**tl-01 [floor tile]**  
tilebar  
ristretto dark  
24"x24" w/ bostik shadow grout



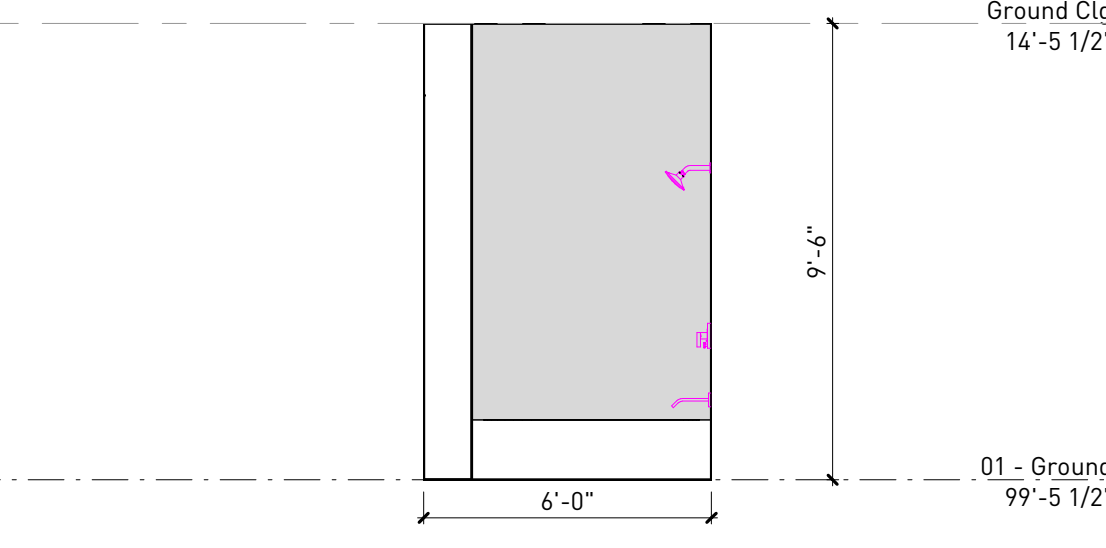
**20** UNIT 101 - BATH - ELEVATION 4  
1/4" = 1'-0"



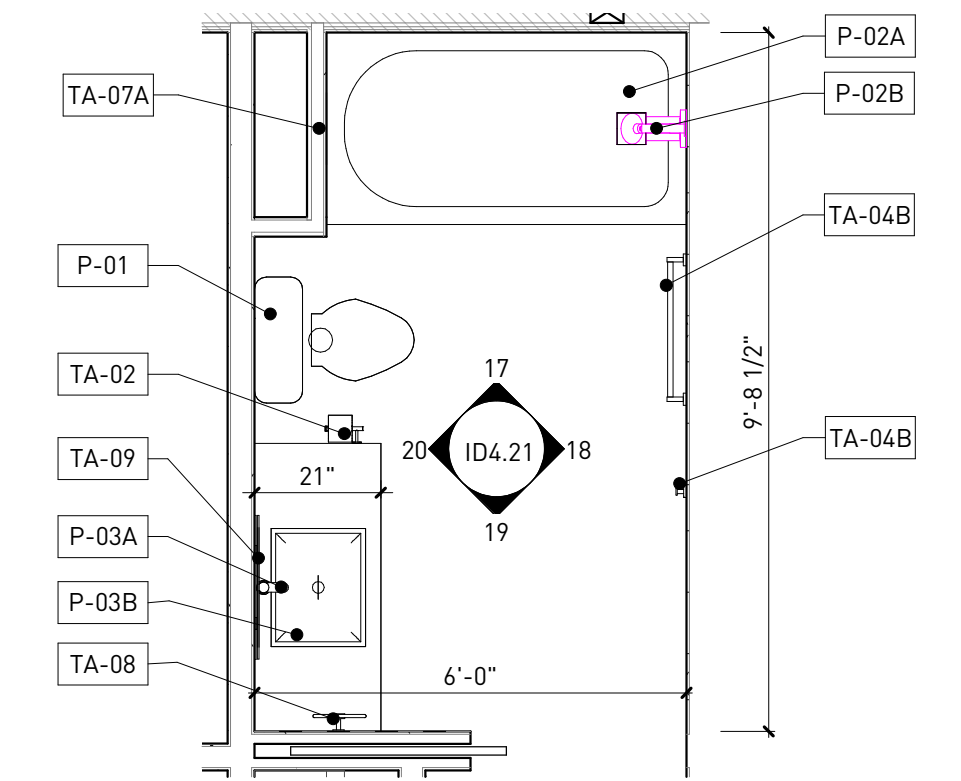
**19** UNIT 101 - BATH - ELEVATION 3  
1/4" = 1'-0"



**18** UNIT 101 - BATH - ELEVATION 2  
1/4" = 1'-0"



**17** UNIT 101 - BATH - ELEVATION 1  
1/4" = 1'-0"



**16** UNIT 101 - BATH - ENLARGED PLAN  
3/8" = 1'-0"



**ta-various [toilet accessories]**  
gatco  
studio - various  
matte black



**p-01 [toilet]**  
swiss madison  
st. tropex sm-1t254  
white



**p-02b [tub/shower trim]**  
brizo  
jason wu t60475-bl  
matte black



**p-02a [tub]**  
kingston brass  
aqua eden hvte603122 (L/R)  
white

**lf-g [sconce / bathbar]**  
kuzco lighting  
vega vl10323-bk  
black



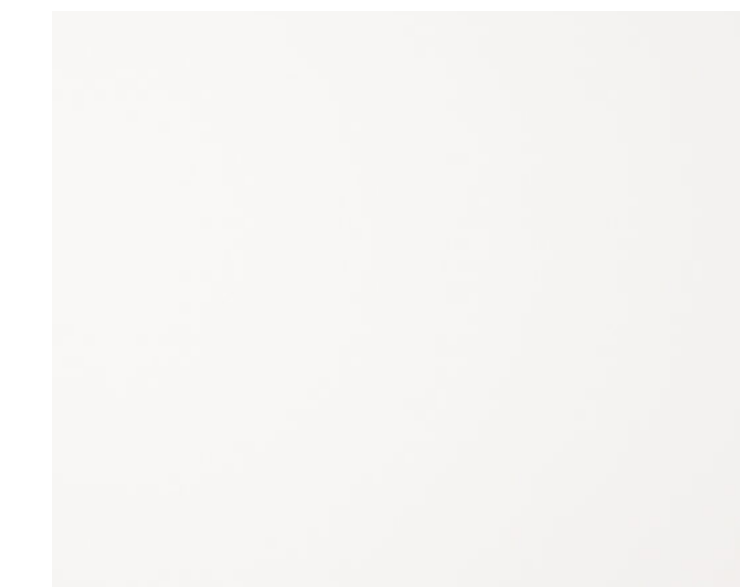
**ta-09 [vanity mirror]**  
renwil  
mt1851  
matte black



**p-03a**  
kingston brass  
continental ls8220ctl  
matte black



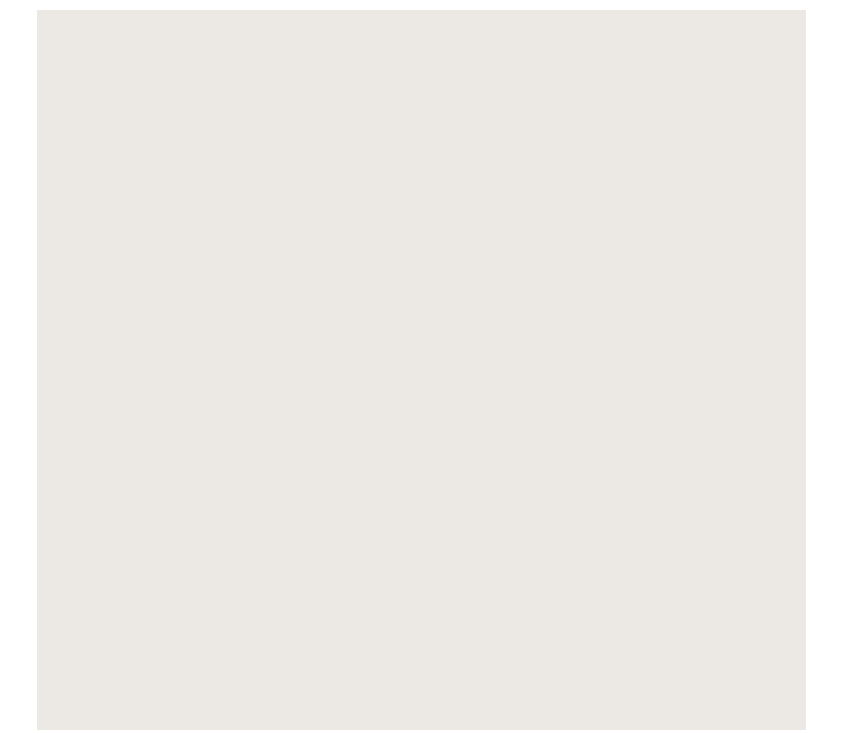
**p-03b [undermount sink]**  
kohler  
verticyl rectangle k-2882  
white



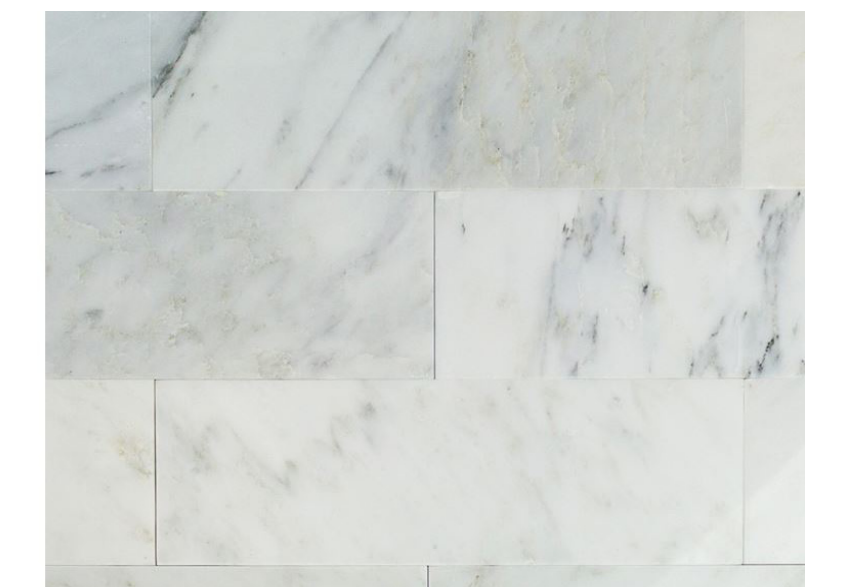
**ct-01 [quartz countertop]**  
msi  
quartz | 3cm artice white 3cm  
artice white, polished



**cab-06 [typ. cabinet]**  
ultracraft  
adriatic  
satin white w/ hardware hdw-01  
hdw-02 | top knobs, tk501blk



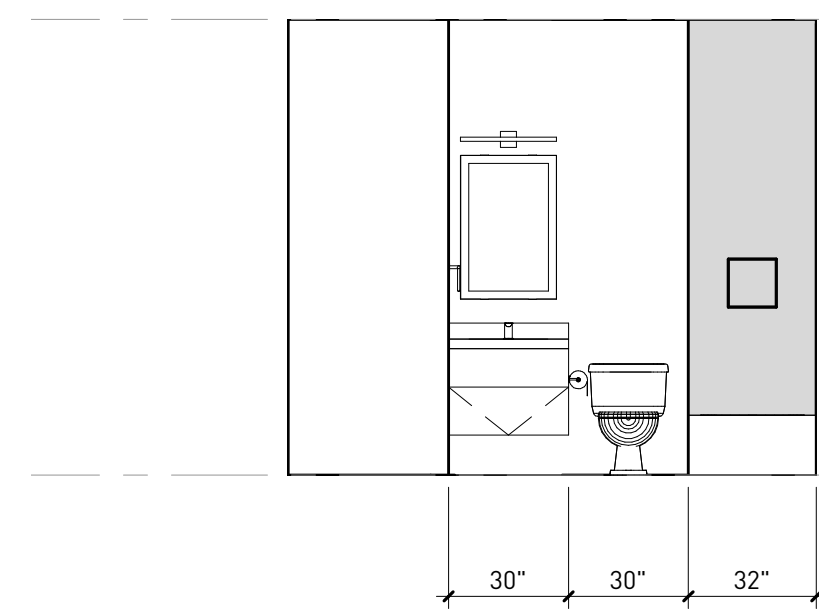
**pt-14 [typical wall paint]**  
sherwin williams | duration home  
snowbound sw7004  
satin finish



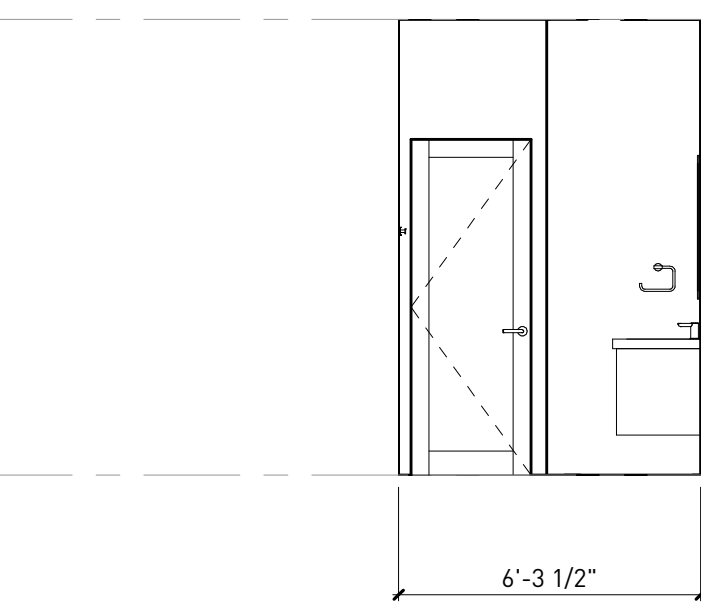
**tl-06 [shower wall tile]**  
tilebar  
asian statuary  
4"x12" w/ bostik white grout



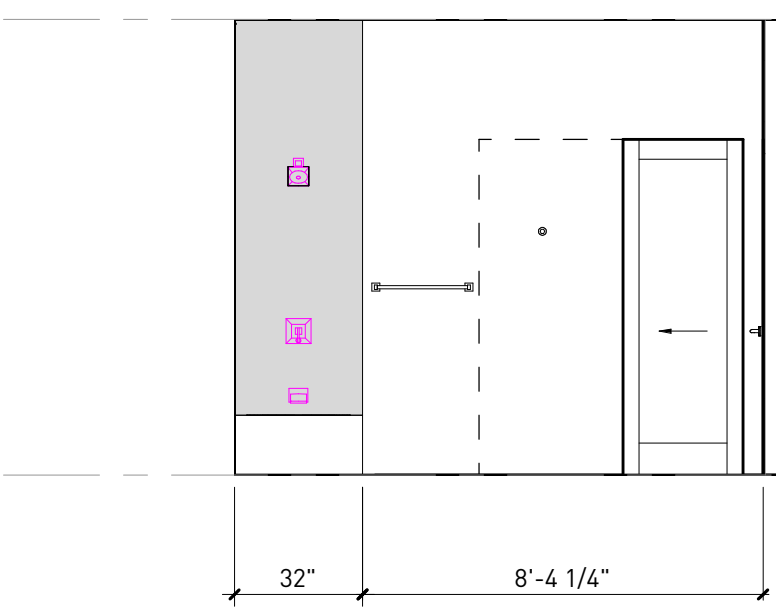
**tl-01 [floor tile]**  
tilebar  
ristretto dark  
24"x24" w/ bostik shadow grout



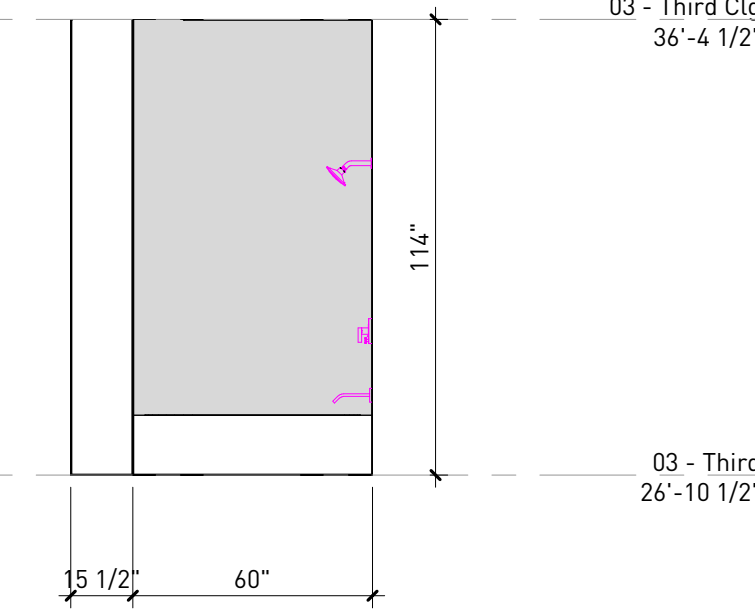
**20 UNIT 201 - BATH - ELEVATION 4**  
ID4.22/ 1/4" = 1'-0"



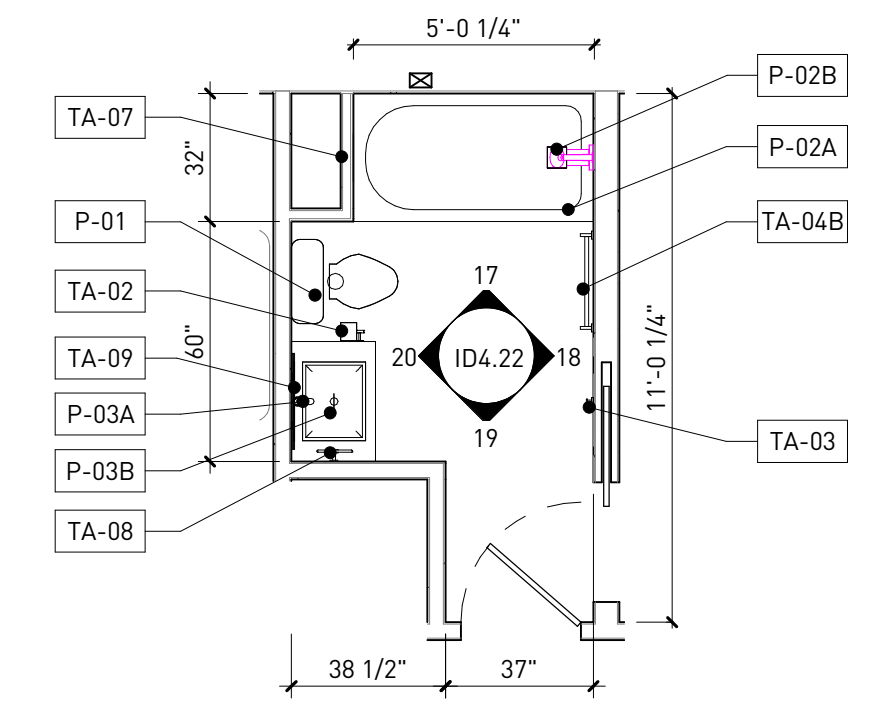
**19 UNIT 201 - BATH - ELEVATION 3**  
ID4.22/ 1/4" = 1'-0"



**18 UNIT 201 - BATH - ELEVATION 2**  
ID4.22/ 1/4" = 1'-0"



**17 UNIT 201 - BATH - ELEVATION 1**  
ID4.22/ 1/4" = 1'-0"



**16 UNIT 201 - BATH - ENLARGED PLAN**  
ID4.22/ 1/4" = 1'-0"



**ta-various [toilet accessories]**  
gatco  
studio - various  
matte black

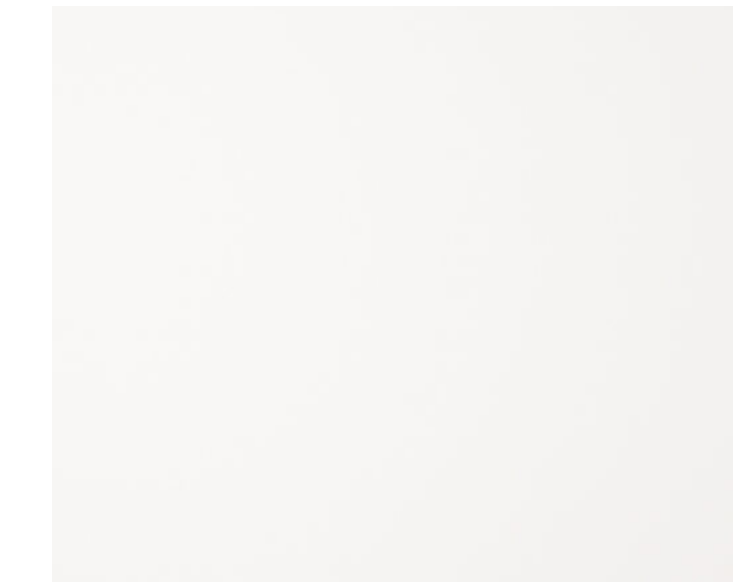


**p-02b [tub/shower trim]**  
brizo  
jason wu t60475-bl  
matte black

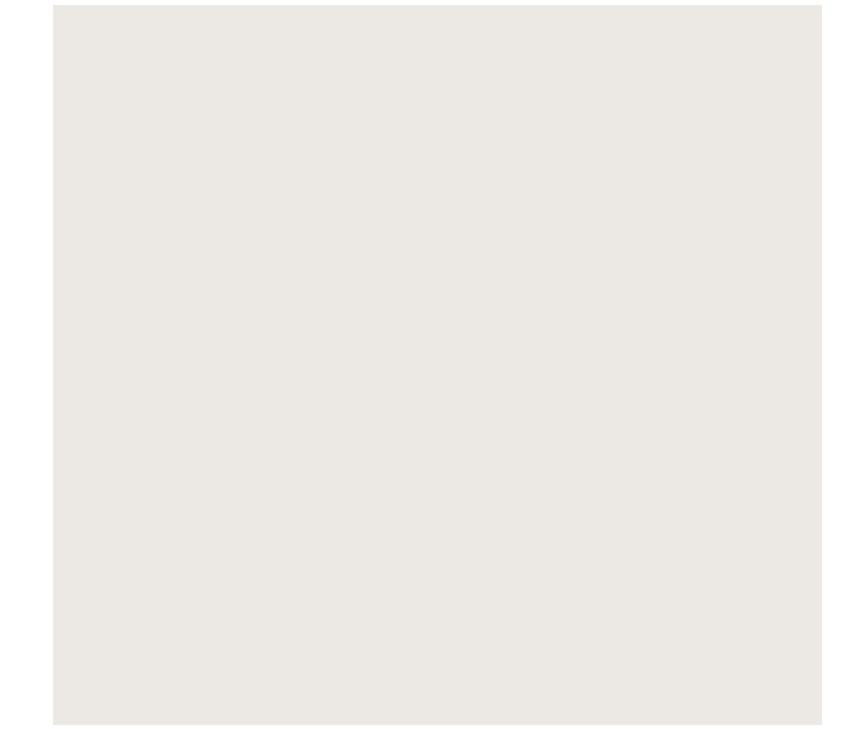
**lf-g [sconce / bathbar]**  
kuzco lighting  
vega vl10323-bk  
black



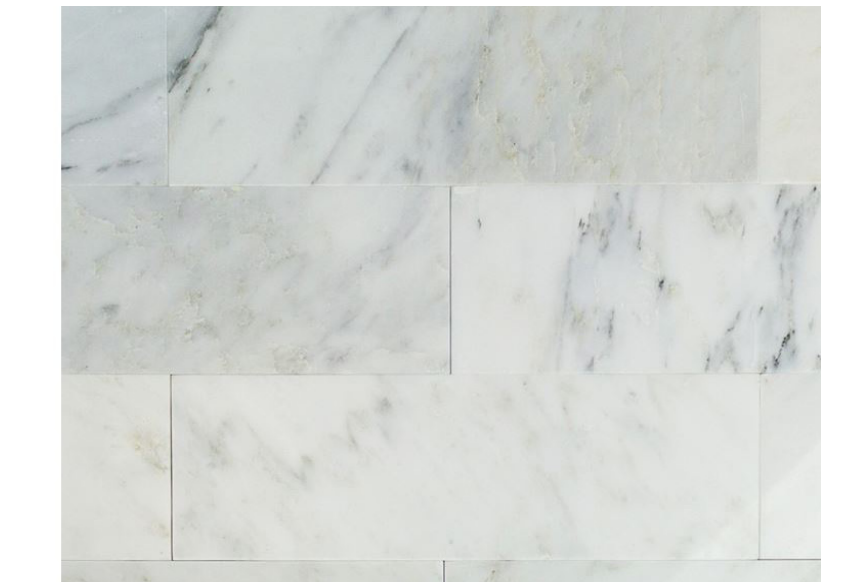
**ta-09 [vanity mirror]**  
renwil  
mt1851  
matte black



**ct-01 [quartz countertop]**  
msi  
quartz | 3cm artice white 3cm  
artice white, polished



**pt-14 [typical wall paint]**  
sherwin williams | duration home  
snowbound sw7004  
satin finish



**tl-06 [shower wall tile]**  
tilebar  
asian statuary  
4"x12" w/ bostik white grout



**p-01 [toilet]**  
swiss madison  
st. tropex sm-1t254  
white



**p-02a [tub]**  
kingston brass  
aqua eden hvte603122 (L/R)  
white

**p-03a**  
kingston brass  
continental ls8220ctl  
matte black



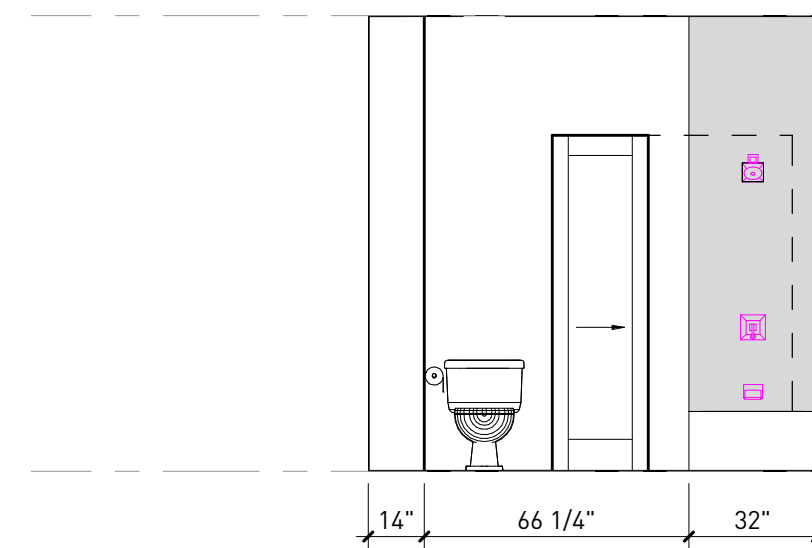
**p-03b [undermount sink]**  
kohler  
verticyl rectangle k-2882  
white



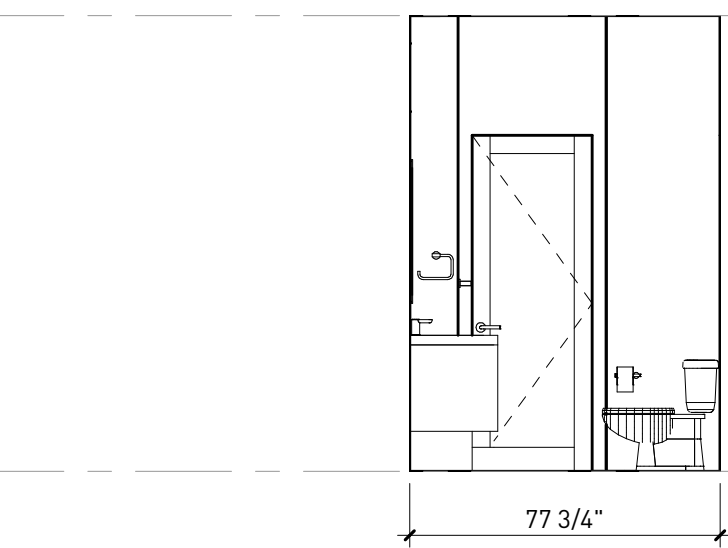
**cab-06 [typ. cabinet]**  
ultracraft  
adriatic  
satin white w/ hardware hdw-01  
hdw-02 | top knobs, tk501blk



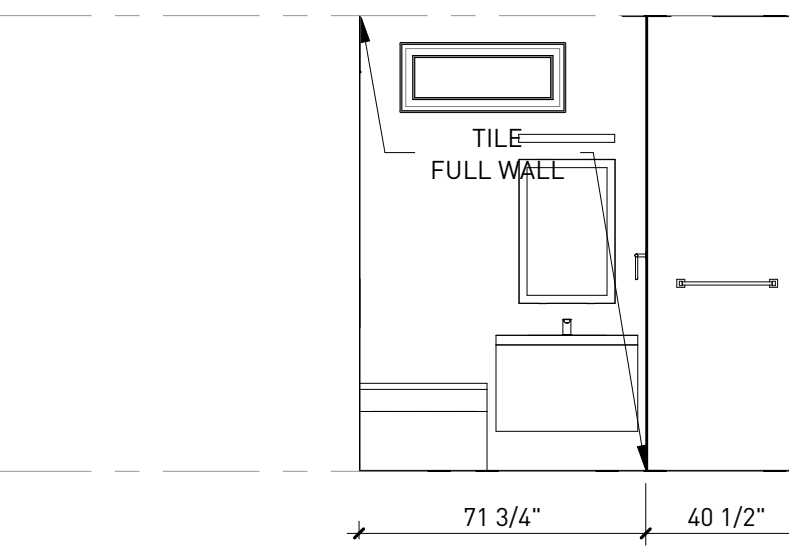
**tl-01 [floor tile]**  
tilebar  
ristretto dark  
24"x24" w/ bostik shadow grout



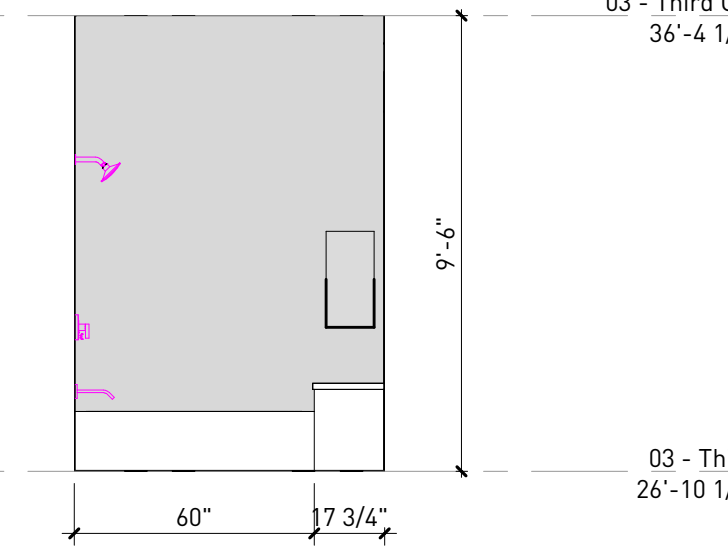
**4** UNIT 202 - BATH - ELEVATION 4  
ID4.23/ 1/4" = 1'-0"



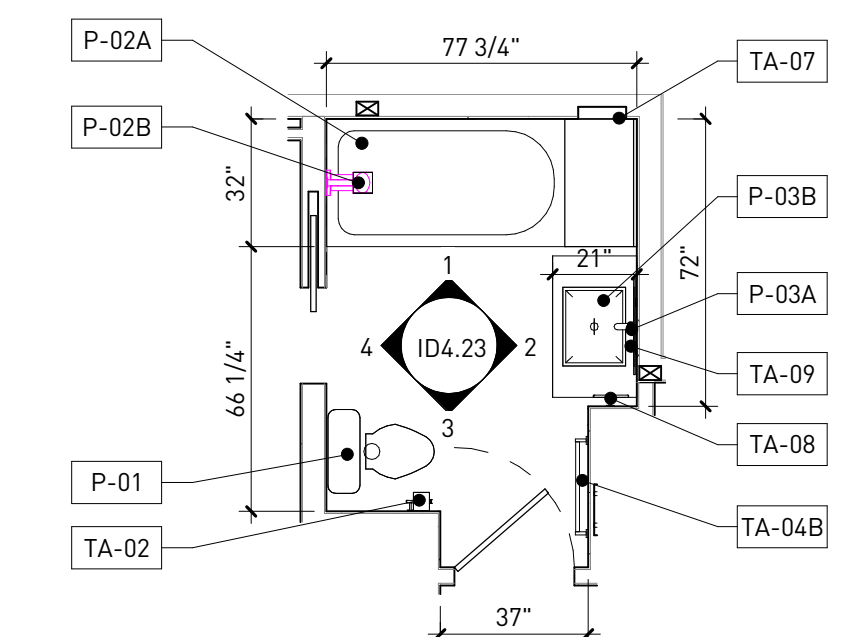
**3** UNIT 202 - BATH - ELEVATION 3  
ID4.23/ 1/4" = 1'-0"



**2** UNIT 202 - BATH - ELEVATION 2  
ID4.23/ 1/4" = 1'-0"



**1** UNIT 202 - BATH - ELEVATION 1  
ID4.23/ 1/4" = 1'-0"



**6** UNIT 202 - BATH - ENLARGED PLAN  
ID4.23/ 1/4" = 1'-0"

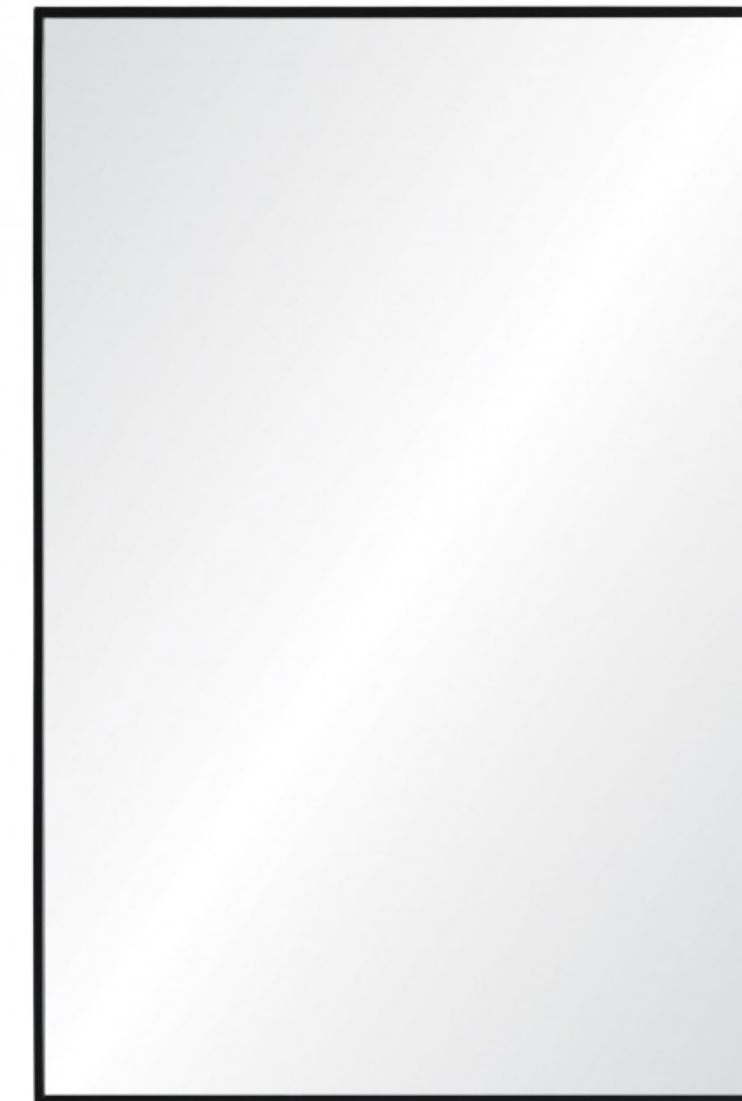


**ta-various [toilet accessories]**  
gatco  
studio - various  
matte black

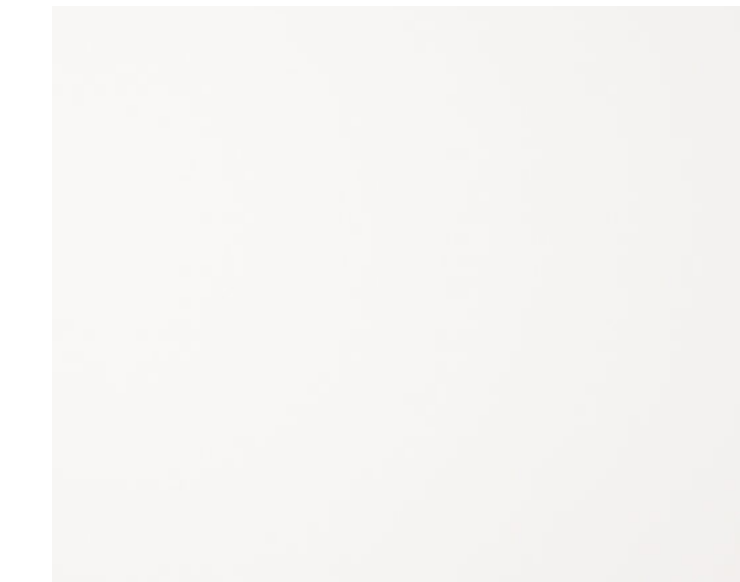


**p-24b [tub/shower trim]**  
delta  
trinsic t14259-bl  
matte black

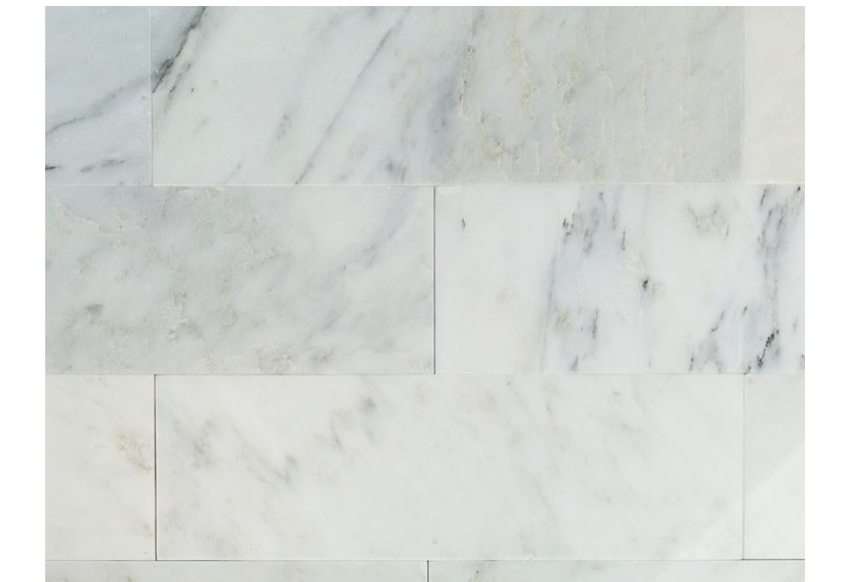
**lf-g [sconce / bathbar]**  
kuzco lighting  
vega vl10323-bk  
black



**ta-09 [vanity mirror]**  
renwil  
mt1851  
matte black



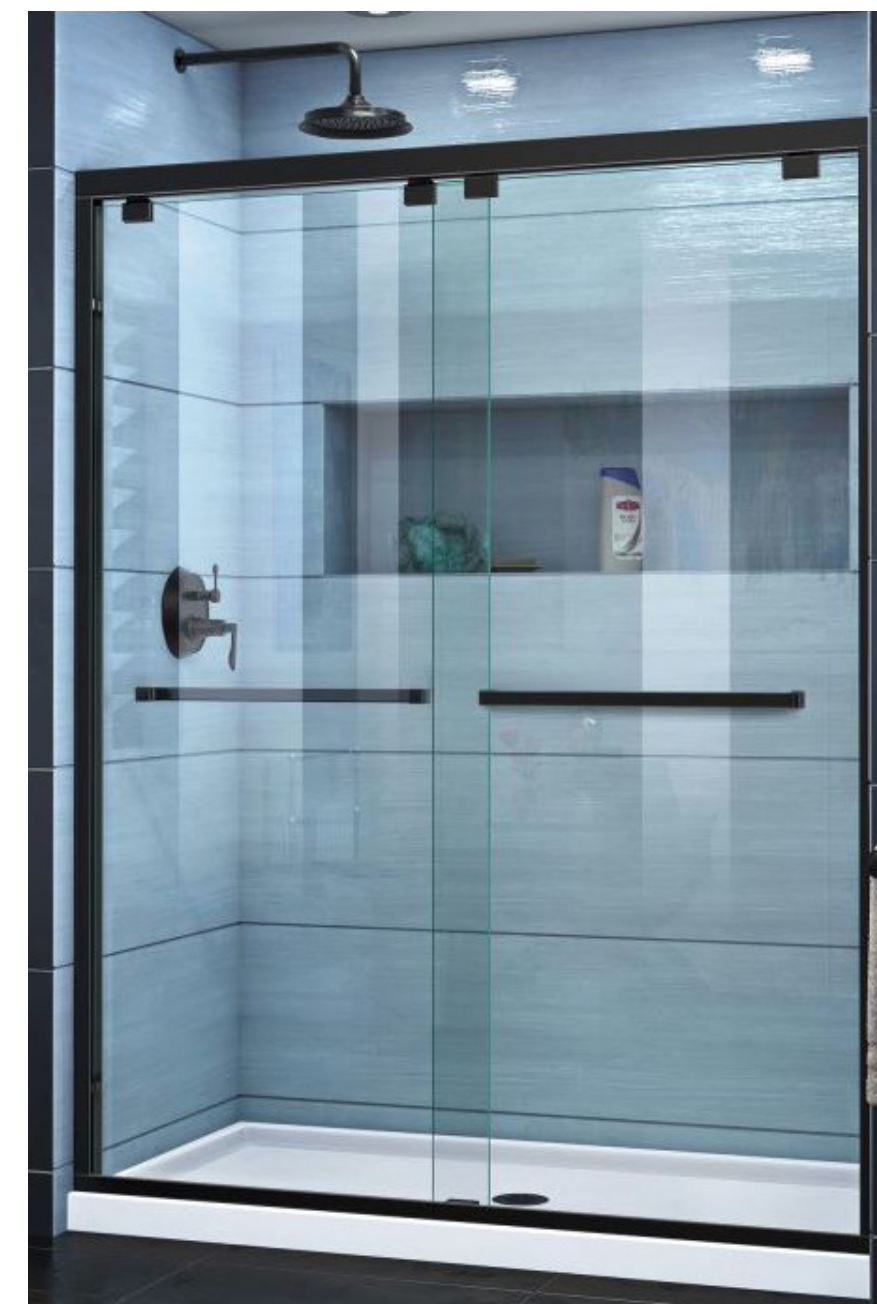
**ct-01 [quartz countertop]**  
msi  
quartz | 3cm artice white 3cm  
artice white, polished



**tl-06 [shower wall tile]**  
tilebar  
asian statuary  
4"x12" w/ bostik white grout



**p-01 [toilet]**  
swiss madison  
st. tropex sm-1t254  
white



**ta-06 [shower door kit]**  
dreamline  
shdr-1660760-09  
satin black

**p-03a**  
kingston brass  
continental ls8220ctl  
matte black



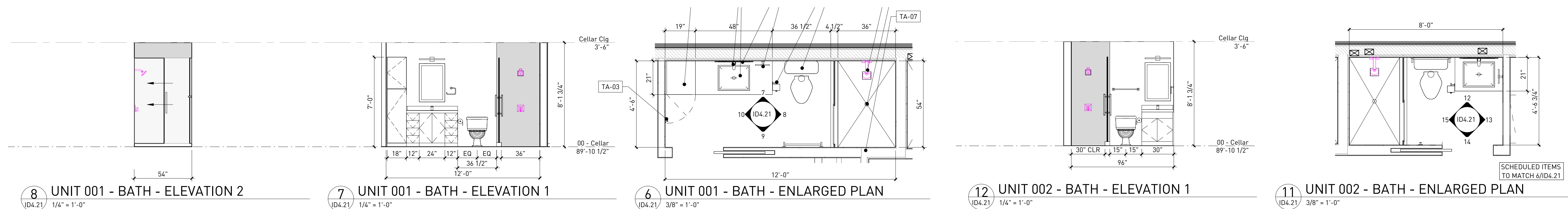
**p-03b [undermount sink]**  
kohler  
verticyl rectangle k-2882  
white



**cab-06 [typ. cabinet]**  
ultracraft  
adriatic  
satin white w/ hardware hdw-01  
hdw-02 | top knobs, tk501blk



**tl-01 [floor tile]**  
tilebar  
ristretto dark  
24"x24" w/ bostik shadow grout





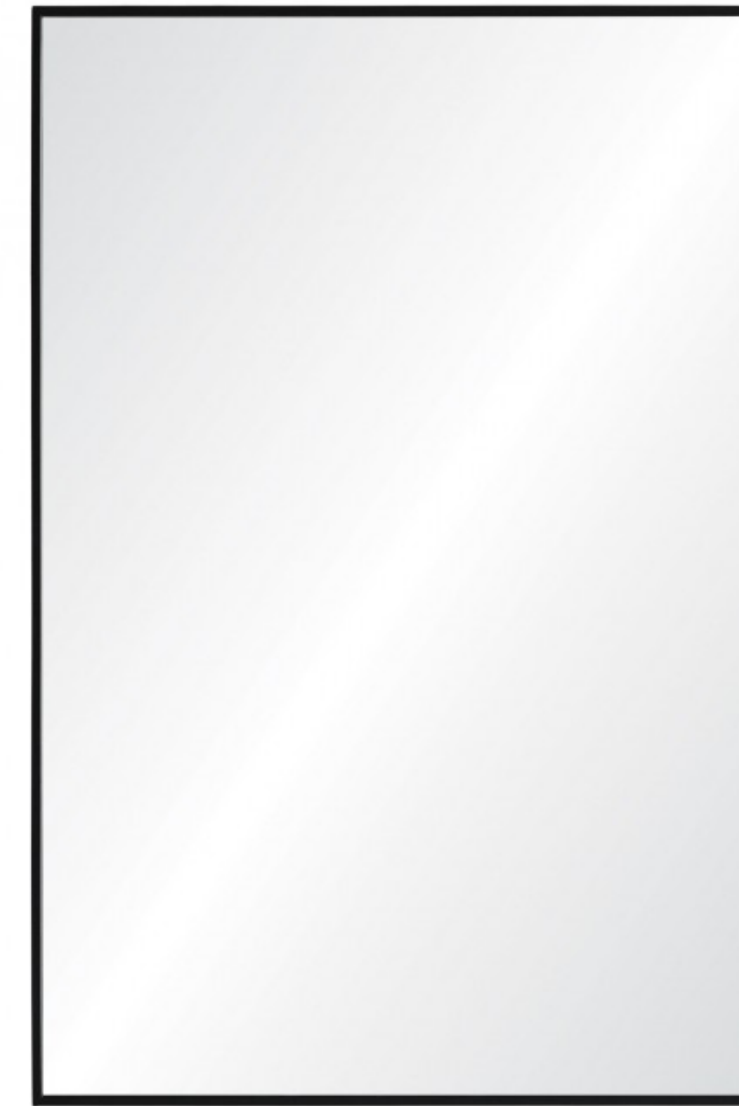


**ta-various [toilet accessories]**  
gatco  
studio - various  
matte black

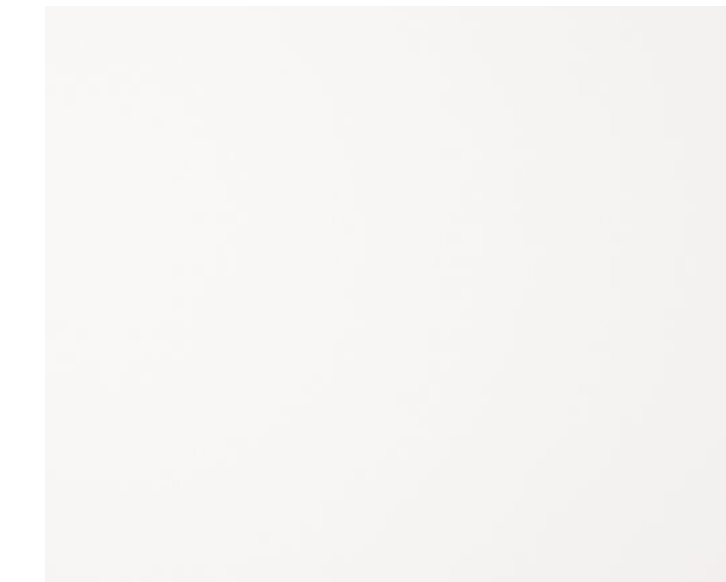


**p-04b [tub/shower trim]**  
brizo  
jason wu t60275-bl  
matte black

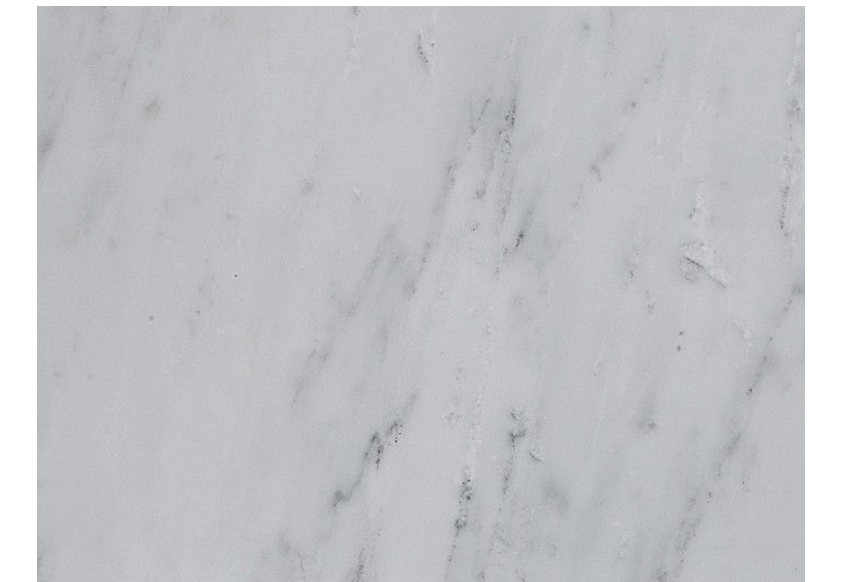
**lf-g [sconce / bathbar]**  
kuzco lighting  
vega vl10323-bk  
black



**ta-01 [vanity mirror / med. cab.]**  
cb2  
infinity | 220187  
matte black



**ct-01 [quartz countertop]**  
msi  
quartz | 3cm artic white 3cm  
artic white, polished



**pt-14 [typical wall paint]**  
sherwin williams | duration home  
snowbound sw7004  
satin finish

**tl-05 [shower wall tile]**  
tilebar  
asian statuary  
12"x24" w/ bostik white grout



**ta-10 [towel warmer]**  
warmly yours  
elevate tahoe | tws2-tah07kh  
matte black



**p-01 [toilet]**  
swiss madison  
st. tropex sm-1t254  
white



**gl-02 [shower door kit]**  
dreamline  
tbd  
black | frameless | swing door

**p-03d**  
kingston brass  
concord wall mount | ks8120dl  
matte black



**p-03b [undermount sink]**  
kohler  
verticyl rectangle k-2882  
white



**cab-06 [typ. cabinet]**  
ultracraft  
adriatic  
satin white w/ hardware hdw-01  
hdw-02 | top knobs, tk501blk



**tl-01 [floor tile]**  
tilebar  
ristretto dark  
24"x24" w/ bostik shadow grout



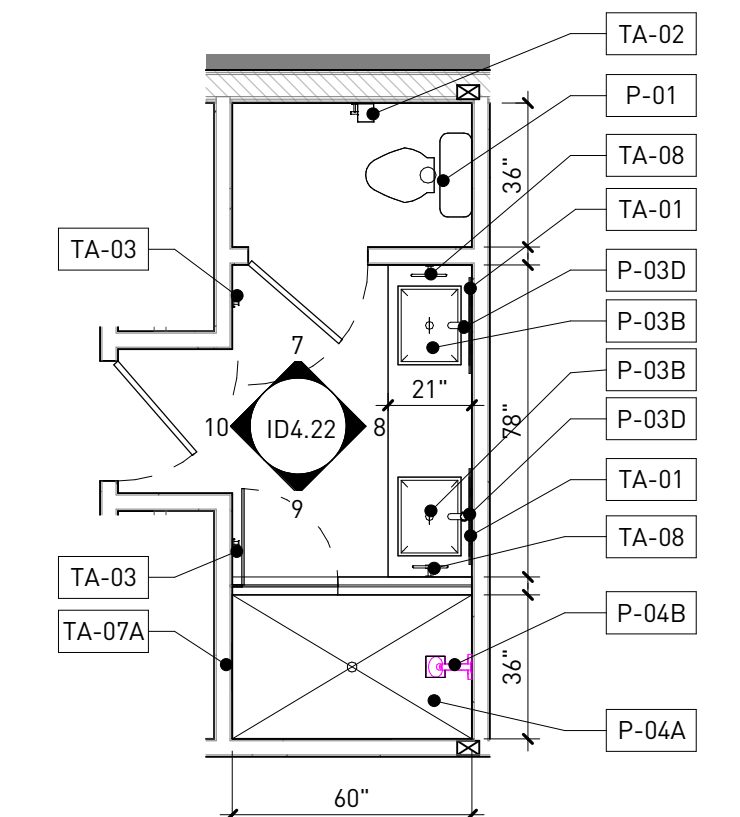
10 UNIT 101 - M BATH - ELEVATION 4  
ID4.22/ 1/4" = 1'-0"

9 UNIT 101 - M BATH - ELEVATION 3  
ID4.22/ 1/4" = 1'-0"

8 UNIT 101 - M BATH - ELEVATION 2  
ID4.22/ 1/4" = 1'-0"

7 UNIT 101 - M BATH - ELEVATION 1  
ID4.22/ 1/4" = 1'-0"

6 UNIT 101 - M BATH - ENLARGED PLAN  
ID4.22/ 1/4" = 1'-0"



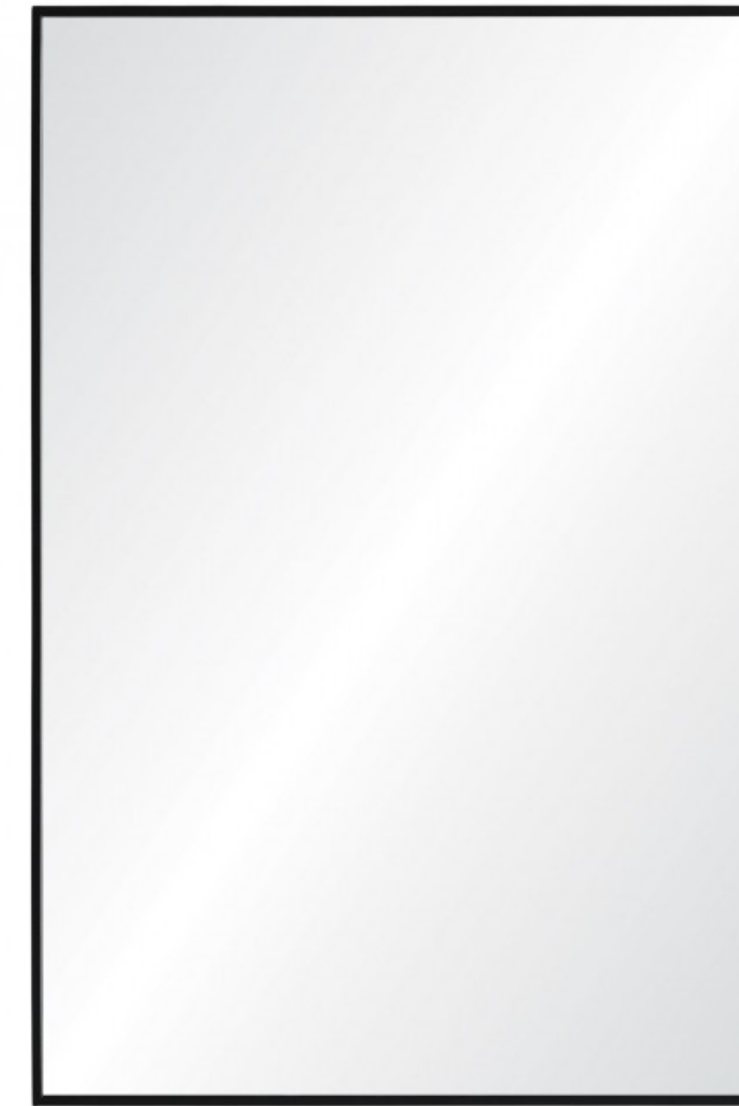


**ta-various [toilet accessories]**  
gatco  
studio - various  
matte black

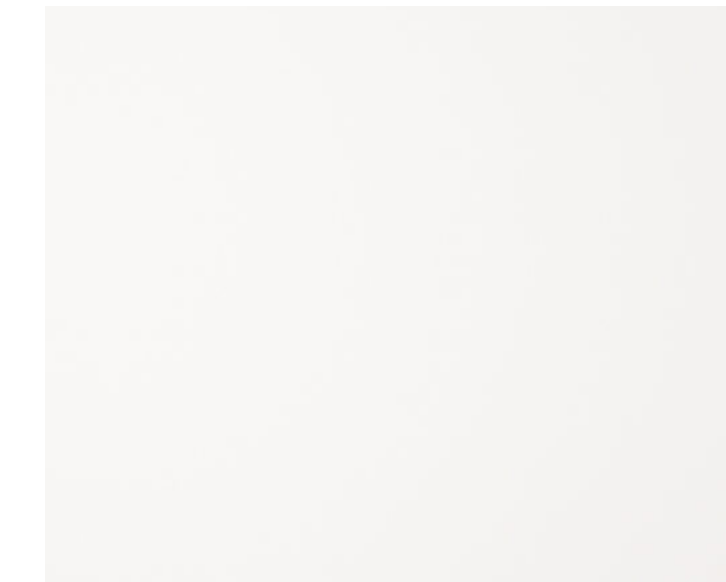


**p-04b [tub/shower trim]**  
brizo  
jason wu t60275-bl  
matte black

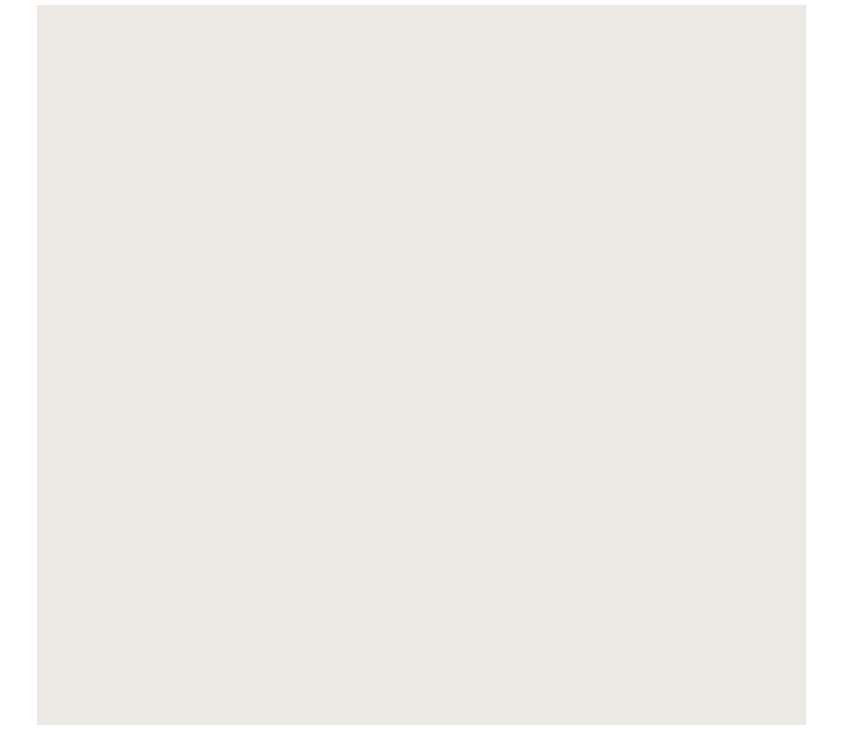
**lf-g [sconce / bathbar]**  
kuzco lighting  
vega vl10323-bk  
black



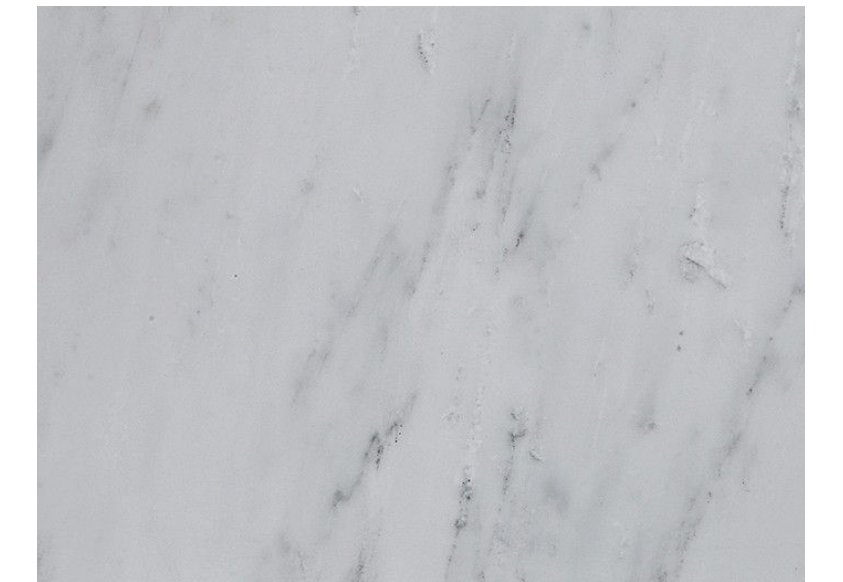
**ta-01 [vanity mirror / med. cab.]**  
cb2  
infinity | 220187  
matte black



**ct-01 [quartz countertop]**  
msi  
quartz | 3cm artic white 3cm  
artic white, polished



**pt-14 [typical wall paint]**  
sherwin williams | duration home  
snowbound sw7004  
satin finish



**tl-05 [shower wall tile]**  
tilebar  
asian statuary  
12"x24" w/ bostik white grout



**ta-10 [towel warmer]**  
warmly yours  
elevate tahoe | tws2-tah07kh  
matte black



**p-01 [toilet]**  
swiss madison  
st. tropex sm-1t254  
white



**gl-02 [shower door kit]**  
dreamline  
tbd  
black | frameless | swing door

**p-03d**  
kingston brass  
concord wall mount | ks8120dl  
matte black



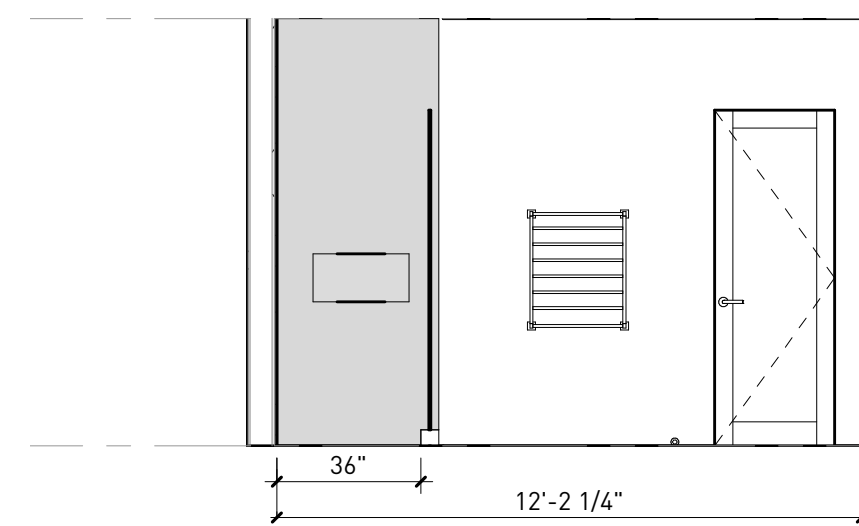
**p-03b [undermount sink]**  
kohler  
verticyl rectangle k-2882  
white



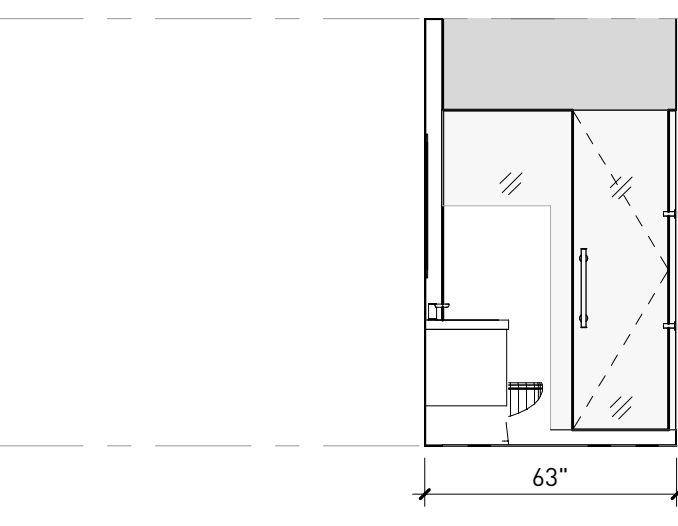
**cab-06 [typ. cabinet]**  
ultracraft  
adriatic  
satin white w/ hardware hdw-01  
hdw-02 | top knobs, tk501blk



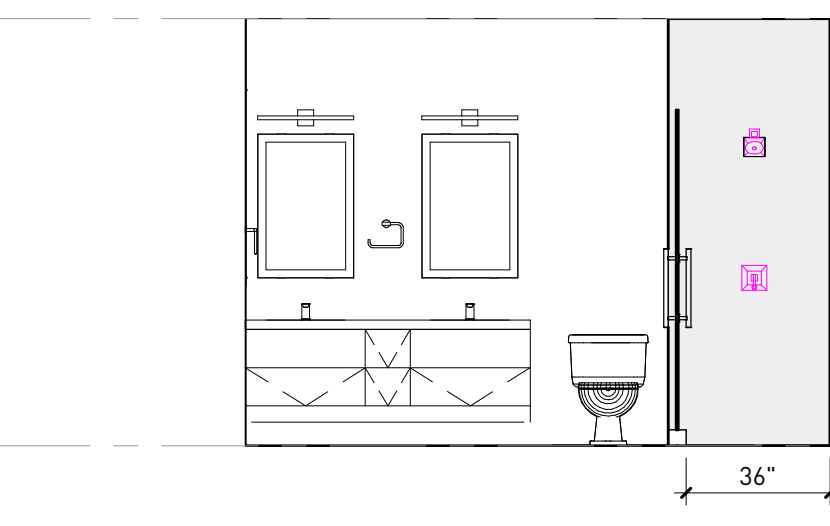
**tl-01 [floor tile]**  
tilebar  
ristretto dark  
24"x24" w/ bostik shadow grout



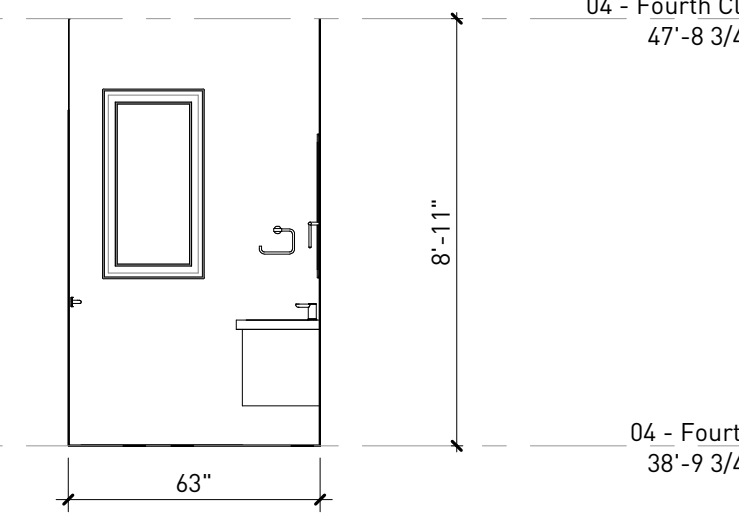
9 UNIT 201/202 - M BATH - ELEVATION 4  
1/4" = 1'-0"



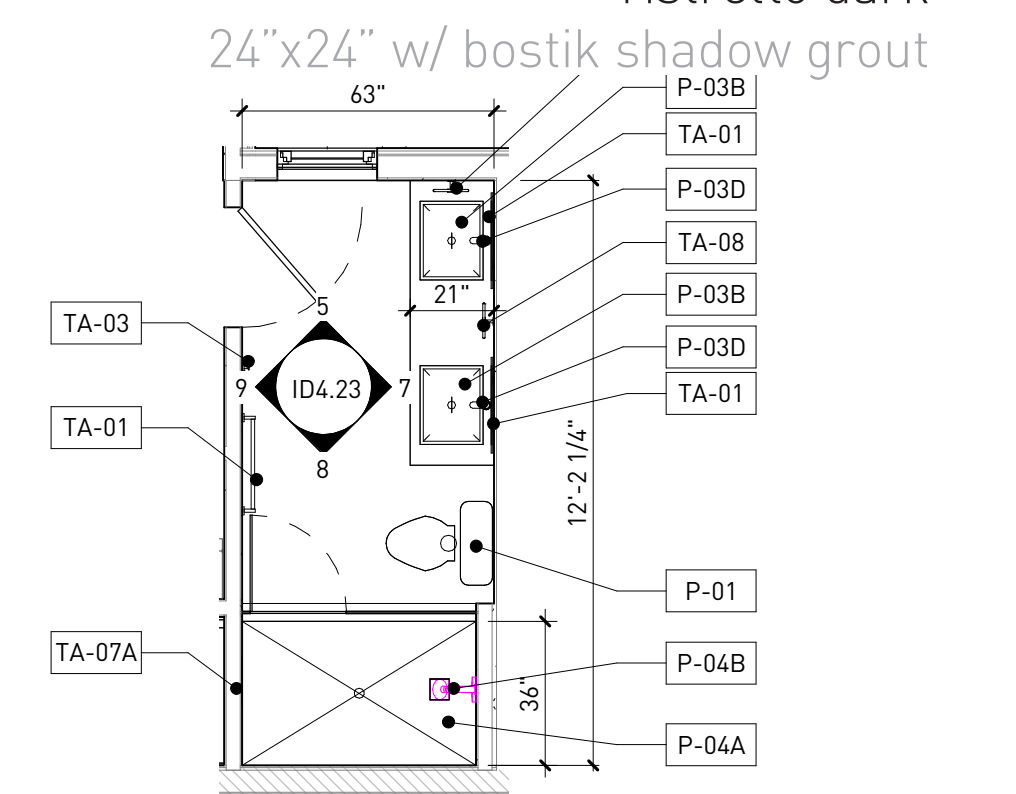
8 UNIT 201/202 - M BATH - ELEVATION 3  
1/4" = 1'-0"



7 UNIT 201/202 - M BATH - ELEVATION 2  
1/4" = 1'-0"



5 UNIT 201/202 - M BATH - ELEVATION 1  
1/4" = 1'-0"



11 UNIT 201/202 - M BATH - ENLARGED PLAN  
1/4" = 1'-0"



**dh-01 [building entry door hardware]**  
baldwin  
6540.190 san diego entrance trim  
satin black



**dh-02 [unit entry door hardware]**  
baldwin  
6940.190 denver entrance trim  
satin black



**lf-e [common stair light]**  
15" platter  
61X55  
black



**dh-03 [typ. interior door hardware]**  
baldwin  
5460V.190 contemporary lever  
satin black



**lf-g1 [powder room sconce]**  
tech lighting  
kenway wall  
matte black



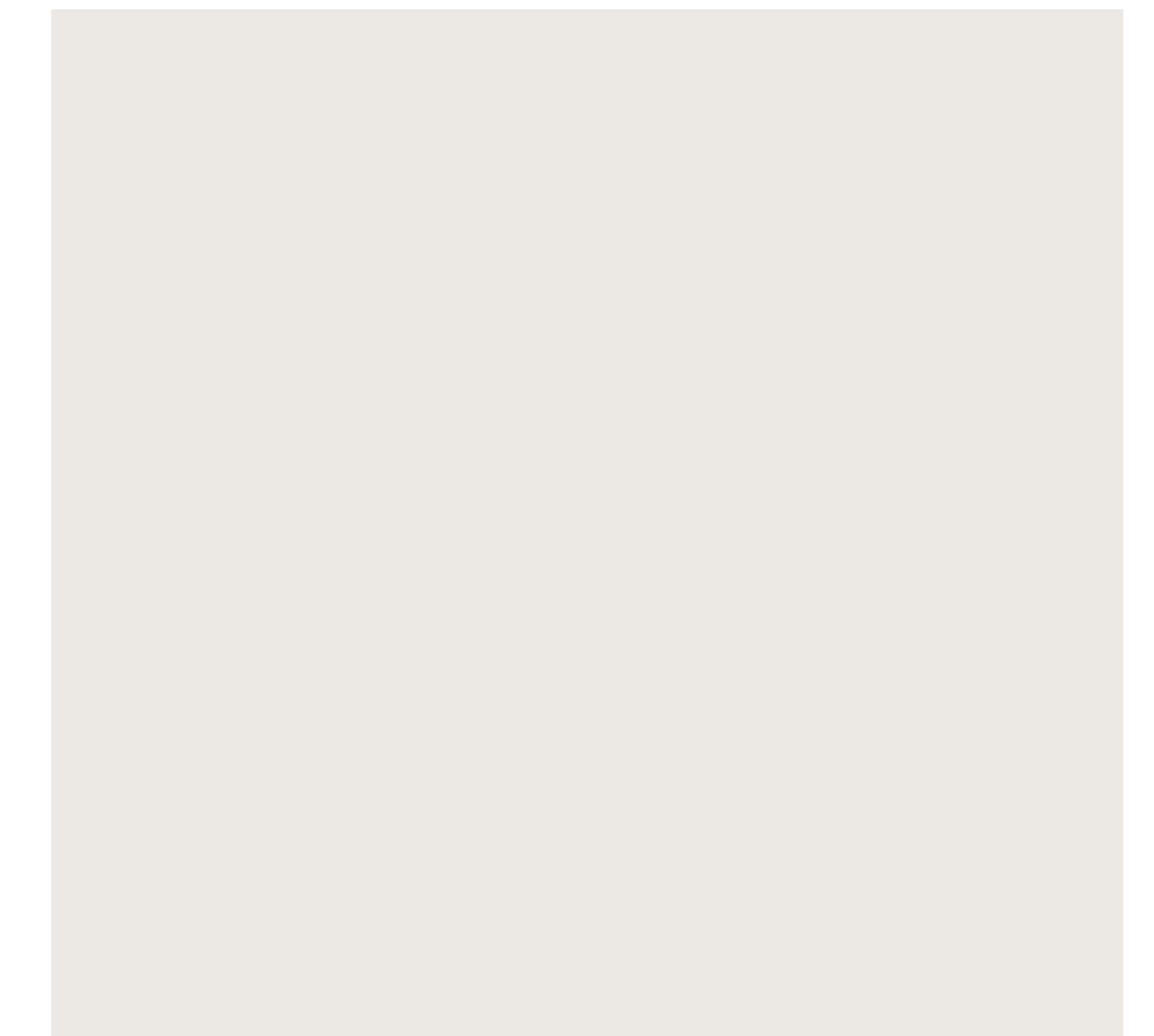
**wc-01 [powder room wallcovering]**  
designtex  
gabardine stripe  
steel



**p-06a [powder room sink]**  
adm bathroom design  
dw-146 (35x19)  
glossy



**lf-e1 [common entry ceiling light]**  
tech lighting  
kosa 13 ceiling  
brass



**pt-11 [typical wall paint]**  
sherwin williams  
snowbound sw7004  
satin



**sp-01 [entry security interface]**  
siedle  
steel  
brushed stainless steel



**sp-02 [interior security interface]**  
siedle  
video panel  
white



**tl-04 [powder room floor tile]**  
marble systems  
york  
snow white



**tl-03 [common entry floor]**  
tile bar  
gabardine ascot merino  
grey, dark grey